

Ontario's Next Multi-Million Oz Au Discovery In The Making



HERITAGE
MINING LTD

Investor Presentation

CSE:HML FRA:Y66 — Q2 '26

Legal Disclaimer

Forward Looking Information and Statements

This presentation contains “forward-looking information” for purposes of applicable Canadian securities laws. Forward-looking information includes statements that use forward-looking terminology such as “may”, “could”, “would”, “will”, “should”, “intend”, “target”, “plan”, “expect”, “budget”, “estimate”, “forecast”, “schedule”, “anticipate”, “believe”, “continue”, “potential”, “view” or the negative or grammatical variation thereof or other variations thereof or comparable terminology. Such forward looking information includes, without limitation, statements with respect to the Company’s expectations, strategies and plans for the Company’s: expected costs, budgets, timing and results of planned and future exploration; estimated completion dates for certain milestones and the Company’s plans; future financial or operating performance and condition of the Company and its business, operations and properties, including expectations regarding liquidity, capital structure, competitive position in its industry; and any other statement that may predict, forecast, indicate or imply future plans, intentions, levels of activity, results, performance or achievements.

Although the Company bases the forward-looking information contained in this presentation upon assumptions that it believes are reasonable, the Company cautions investors that actual results and developments (including its financial performance, financial condition and liquidity, and the development of the industry in which it operates) may differ materially from those made in or suggested by the forward-looking statements contained in this presentation. Despite a careful process to prepare and review the forward-looking statements, there can be no assurance that the underlying opinions, estimates and assumptions will prove to be correct. By their nature, forward-looking information and statements related thereto involve risks and uncertainties because they relate to events and depend upon circumstances that may or may not occur in the future. The Company believes that these risks and uncertainties include, but are not limited to, those described under "Risk Factors" in the final prospectus.

Technical Disclosure

Technical and scientific information contained herein relating to the Drayton-Black Lake

Project is derived from the independent technical report entitled “NI 43-101 Technical Report on the Drayton - Black Lake Project, Drayton and Benedickson Townships, Kenora District, Northwestern Ontario, Canada” dated May 5, 2022, and effective as of April 29, 2022, prepared by James G. Clark, P. Geo., for the Company in accordance with NI 43-101.

Disclaimer to United States Investors

The securities of the Company have not been registered under the United States Securities Act of 1933, as amended (the "U.S. Securities Act"), or any state securities laws and may not be offered or sold within the United States or to U.S. Persons unless registered under the U.S. Securities Act and applicable state securities laws or an exemption from such registration is available.

This presentation does not constitute an offer to sell or buy securities

This presentation does not constitute an offer to sell or the solicitation of an offer to buy, nor shall there be any sale of the securities of the Company in any jurisdiction in which such offer, solicitation or sale would be unlawful prior to registration or qualification under the securities laws of such jurisdiction.

Qualified Persons

The technical information in this presentation has been approved by Mitchell Lavery, P. Geo, and Stephen Hughes, P. Geo advisors to the Company and Qualified Persons as defined by National Instrument “NI” 43-101 Standards of Disclosure for Mineral Projects.

Why Not Melba?

Melba – Ontario's next Multi-Million Oz Gold Discovery in the making

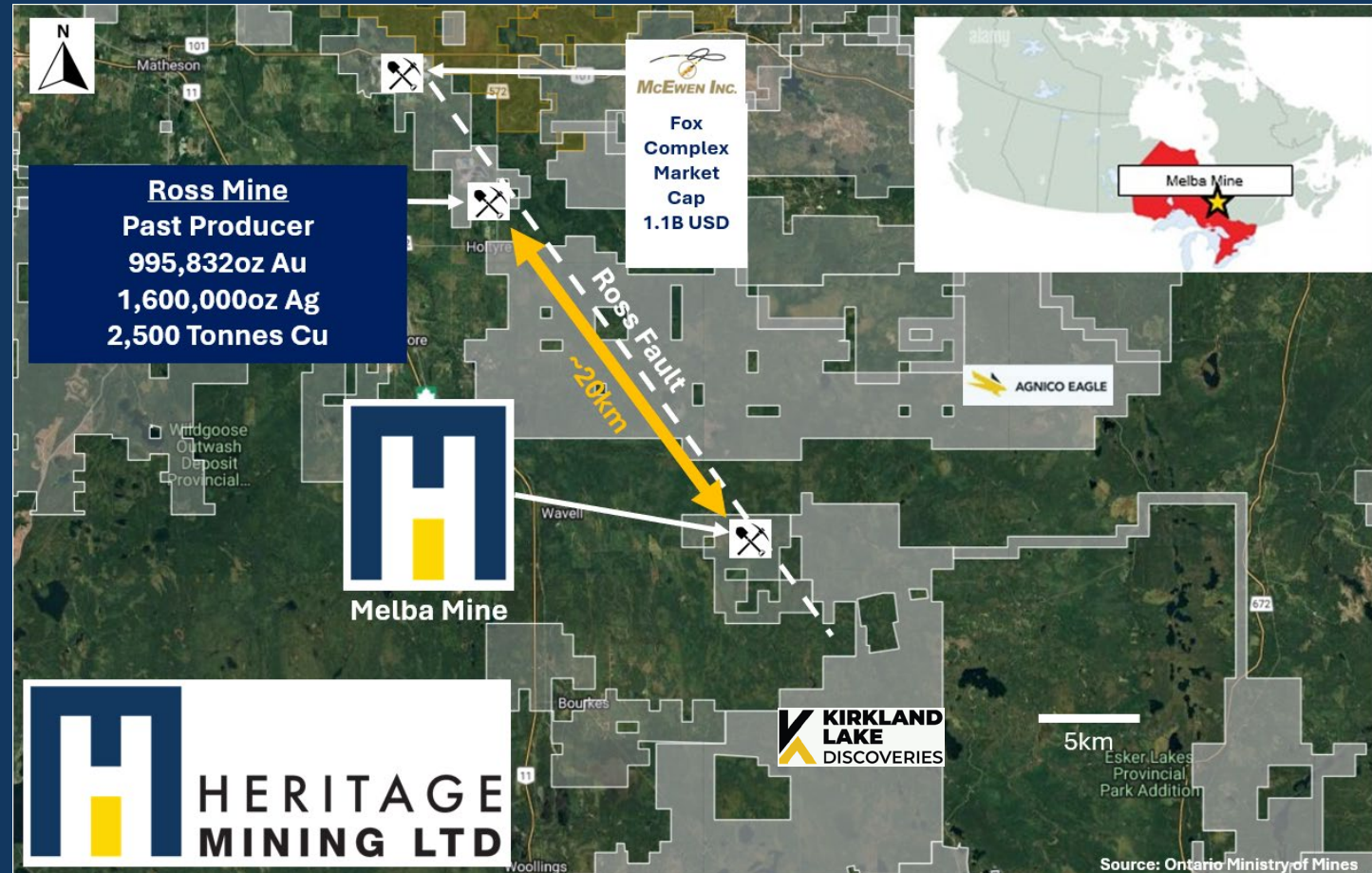
First Modern Confirmation & Expansion program *since 1937 production*

Large Land Package ~4,142 Ha

On Trend with +1Moz Au Deposits and Historic Mines:

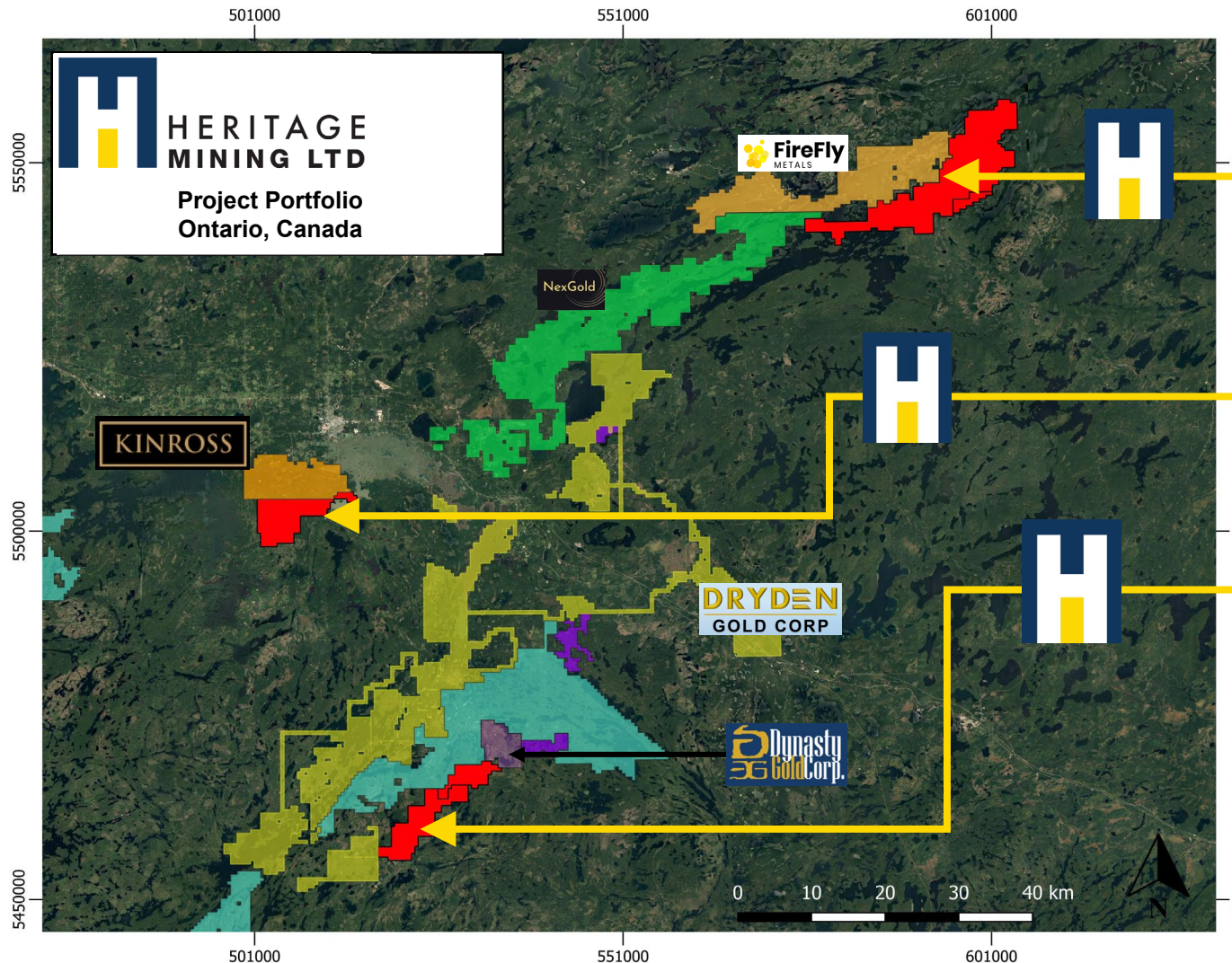
- McEwen Inc. – Black Fox Complex Ross Mine ~1MozAu, Mayfair Gold Corp +4Moz Au, Agnico Eagle

Significant Near Term Exploration Upside



Western Ontario Portfolio

District Scale Discovery Potential in NW Ontario, Canada



Additional Drill Targets 2026



Drayton – Black Lake Project (~19,302 Ha)

New Discovery (2025): Mega Au Bearing Quartz Vein System in Mag Anomaly ~2km

Contact Bay Project (4,516Ha)

Available for Option/Acquisition
Past Producer & Adjacent to Kinross Gold
Multiple High-Quality Base and Precious Metal Target

Scattergood Project

Available for Option/Acquisition

- Two New Gold Discoveries (2025):
1. Northeastern Portion – Similar to Dynasty Gold
 2. Southwestern Portion – Possible Sherridon Extension (up to 617g/t in Au Rocks, Dryden Gold)

VG + High-Grade Gold

Melba Mine – High-Grade Historical Au Mine
~4,142Ha

Fully Funded In House Drilling and Exploration Program:

2025/2026: Active Drilling Confirming Historical and New High-Grade Zones

Multiple High-Grade Intercepts, near surface across ~100m Strike, open in all directions

- ML3900-002: *8.57g/ Au over 3m from 66m*
- ML3900-003: *9.06g/t Au over 1m from 52m* Terminating in Underground workings

Multiple Visible Gold Intercepts along ~100m Strike Extension Within ~30 days of 2026 Diamond Drilling Program

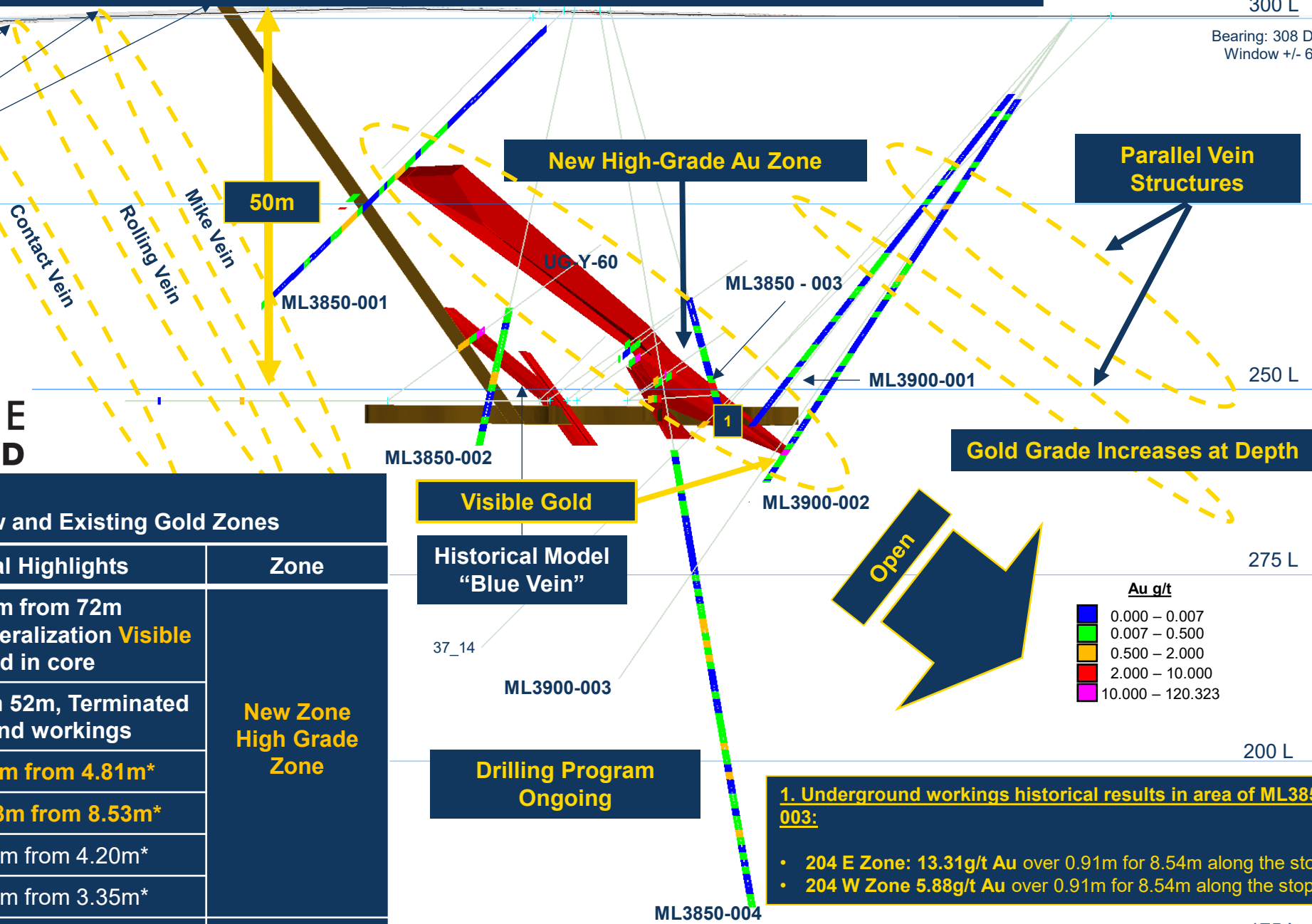


Why Investors Should Be Excited

300 L

Bearing: 308 Dip: -0
Window +/- 60m

Veins Exposed at Surface
Historical commentary of multiple **visible gold** occurrences



**Melba Project
Composite Cross Section – New and Existing Gold Zones**

Hole ID	Au g/t Interval Highlights	Zone
ML3900-002	8.57g/t Au 3m from 72m Finished in Au Mineralization Visible Gold noted in core	New Zone High Grade Zone
ML3850-003	9.06g/t Au 1m from 52m, Terminated at underground workings	
UG-Q-60:	34.29 g/t Au 1.4m from 4.81m*	
UG-T-60:	14.58 g/t Au 1.98m from 8.53m*	
UG-R-60:	2.72 g/t Au 2.71m from 4.20m*	
UG-S-60:	4.42 g/t Au 1.52m from 3.35m*	Blue Vein
UG-Y-60:	25.64 g/t Au 4.57m from 12.04m*	

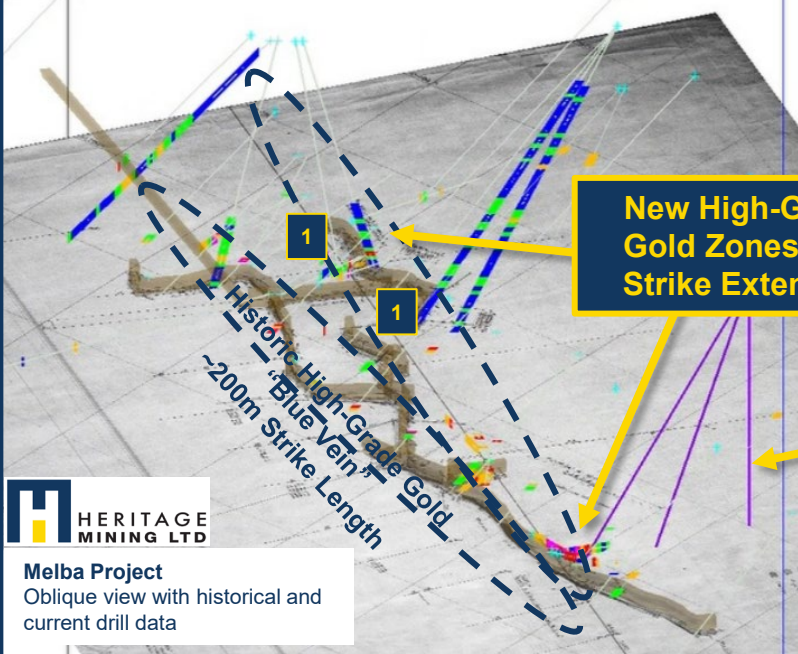
1. Underground workings historical results in area of ML3850-003:

- 204 E Zone: 13.31g/t Au over 0.91m for 8.54m along the stope
- 204 W Zone 5.88g/t Au over 0.91m for 8.54m along the stope

*Historic Drilling Selectively Sampled or not available

Hole ID	Au g/t Interval Highlights	Zone
UG-B-60	6.95g/t Au 13.41m from 0.61m*	New High-Grade Gold Zone
UG-C-60	5.46g/t Au 15.39m from 1.07m*	
UG-E-60	4.05g/t Au 9.85m from start of hole*	
UG-F-60	3.47g/t Au 4.42m from 0.88m*	
ML3840-001	1.45g/t Au over 4.5m from 66m	
37-18	14.24g/t Au 4.11m from 123.90m*	

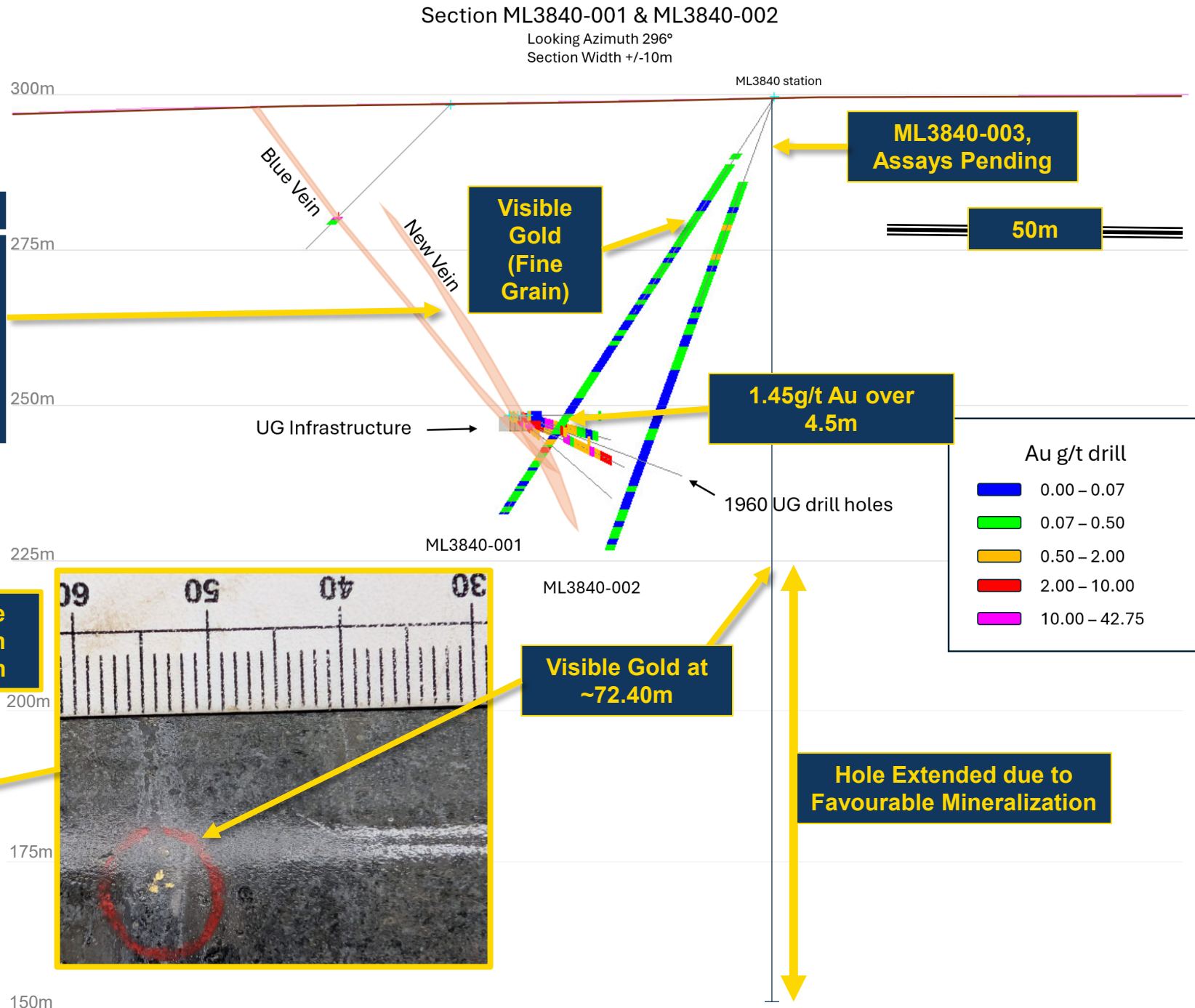
*Historic Drilling Selectively Sampled or not available



HERITAGE MINING LTD
 Melba Project
 Oblique view with historical and current drill data

1 Underground workings historical results in area of ML3850-003:

- 204 E Zone: 13.31g/t Au over 0.91m for 8.54m along the stope
- 204 W Zone 5.88g/t Au over 0.91m for 8.54m along the stope



Significant Exploration Upside

Melba Mine – Path Forward

Planned Program 2026

Rapidly Develop Melba Mine Footprint to Multi Million AuOz Target Potential

Leveraging Historical data for the First Modern Confirmation & Expansion program since 1937

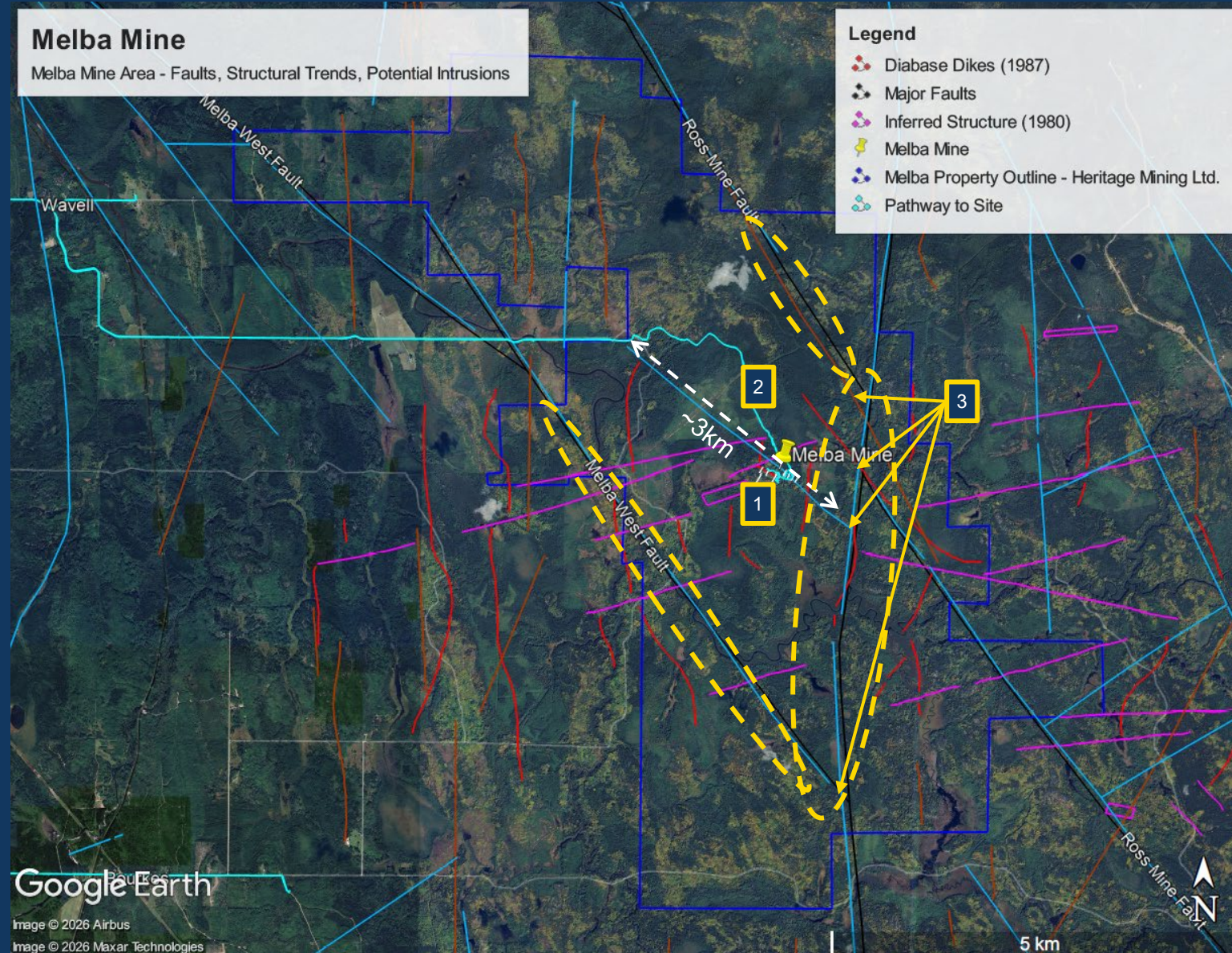
How ?

2026 Large Scale Exploration Program Targeting Program

Diamond Drilling

Geophysics

Geochemistry



News Flow and Upcoming Catalyst

	Q2/26			Q3/26	Q4/26	Q1/27
Project Portfolio	April	May	June			
Melba Project (4,142 Ha)	Melba Mine Expansion: Diamond Drilling - Ongoing					
	Property Wide Geophysics & Structural Analysis	Target Generation, Geochem, Drill Permitting	New Target Diamond Drilling			
DBL (19,302 Ha)	Property Wide Exploration: Geophysics, Structural Analysis, Geochem, New Drill Target, Permitting, Diamond Drilling			New Target Diamond Drilling		
Scattergood (6,397 Ha)				New Target Diamond Drilling		

Company Snapshot

Summary

Couloir Capital (Buy: Coverage)	C\$0.40)
Current Share Price*	C\$0.03
Basic (Share o/s)	~223M
Market Capitalization*	~C\$7.80M
Ave. Volume (60 Days)	~880,000 Shares per Day

Warrant Breakdown

Exercise price	Warrants O/S (000's)	Implied Financing (000's)
0.05	51,266	2,563
0.075	14,063	1,054
0.09	592	53
0.10	37,230	3,723
0.15	13,685	2,053
Total	116,245	9,393



Trailing Six months:

- **75% increase from C\$0.02 cents to C\$0.035 cents**
- **Closed Tranche one of PP totalling C\$665,000 @ C\$0.04, 33% Premium to Market**
- US Listing process and Upsized PP to C\$1.5M
- Melba Acquisition – Rapid Advancement:
 - Due Diligence, Acquisition, Permitting, Diamond Drilling
 - Multiple VG and High-Grade Gold Intercept across ~100m Strike

Board of Directors



Peter Schloo, CPA, CA, CFA
CEO, President & Director

Director of Silver Crown Royalties Inc., Ramp Metals, and Pacific Empire Minerals Corp., Founder of Great White Capital Ltd. and Dealing Representative at Corton Capital. 10yrs of progressive experience in capital markets, operations and assurance. C\$95M in associated capital raised. Mr. Schloo is also a licensed prospector and diamond driller in Ontario, Canada.



Patrick Mohan
Chair & Director

Previously President, CEO, Director & Head of IR at Kitrinor Metals, Inc., Mr. Mohan's past successes also include development of the Cote gold Project and the sale of Trelawney Mining & Exploration to IAMGOLD Corp for C\$585 million (US\$595 million) in cash In 2012.



Wray Carvelas
Director, Chair of Compensation Committee

Mr. Carvelas was previously President, CEO, Director of DRA Global, leading over 4,500 employees across five continents. Prior to that, as Project Director & Senior Project Manager, DRA Mineral Projects, he was responsible for project execution across a ~C\$5B portfolio of development and production operations. He has also held various positions at KBR, ELB, and De Beers.

Management & Technical Team



Patrick Sullivan
Corporate Secretary

Mr. Sullivan is a mining, M&A and securities lawyer at a national law firm with a decade of experience in the junior mineral exploration sector. He has acted on several significant global mining transactions such as South32 Limited's \$2.1 billion acquisition of Arizona Mining, Washington Companies' \$1.2 billion acquisition of Dominion Diamond Corp, and Hudbay Minerals' \$555 million acquisition of Augusta Resource Corporation.



Thomas Reid, CPA, CA
Director, Chair of Audit Committee

Over 30 years of experience in the areas of Finance, Corporate Development, Public Relations and Investor Relations. He holds the CPA, CA designation and has served as the CFO Canada and Head of Corporate Development at Sun Life Financial.



Rachel Chae
CFO

Ms. Chae has been CFO for various publicly traded companies, including a number of Canadian junior mineral exploration companies. She offers eight years of experience and holds the Chartered Professional Accountant designation.

Strategic Geology Advisors



Dr. Brett Davis

Brett is widely regarded in the exploration and mining industry for his application of applied structural geology to numerous commodity types and mineral deposit styles. The approach Brett has brought to understanding mineralizing environments globally is a product of the integration of modern structural geology and techniques married with several decades of applied research.

Brett received a structural geology PhD (1992) from James Cook University following a role as a production geologist at Mt Isa Mines. This was succeeded by six years of applied structural geological postgraduate research before returning to the minerals industry in 1998. Here he held various technical and senior managerial roles at consultancy groups and in mining and exploration companies prior to running his own international geology consultancy, Olinda Gold Pty Ltd. Brett currently holds an Adjunct Senior Research Fellow position at James Cook University.



Stephen Hughes, P.Ge

A senior mining executive with over 30 years' experience in underground block cave and open pit mining operations. Involved in the successful exploration and project development of a number of large scale precious and base metal deposits, primarily in Asia, South America, and the Caribbean. A proven track record of discovery, development and building shareholder value, involved in the discovery and/or delineation of over 49 million ounces of gold, 35 billion pounds of copper.



Mitchell Lavery, P.Ge

Over 45 years experience in exploration and development of mining projects with a number of junior and major mining companies. Discovery of the North Zone at Bell Creek Gold Mine in Timmins, ON; the development and operation of the Joubi Gold Mine, Val-d'Or, QC; and the acquisition and development of the Quebec Lithium property, Lacorne, QC. President and Director of Seahawk Gold Corp. QP NI-43-101 and lifetime member of the PDAC



Paul Warren, P.Ge

Over 29 years of experience in exploration, geotechnical, structural geology and mine operations. Paul's past experience includes PT Freeport McMoran ("Freeport") at the Grasberg Mine, Indonesia where he held a range of operating and management Paul is an expert at computer based modeling and early-stage exploration. He holds a Master of Arts in Geology and a Bachelor of Science Geology from University of Texas at Austin. Paul is a Professional Geologist, Certified Professional Geologist and a Project Management Professional ("PMP").

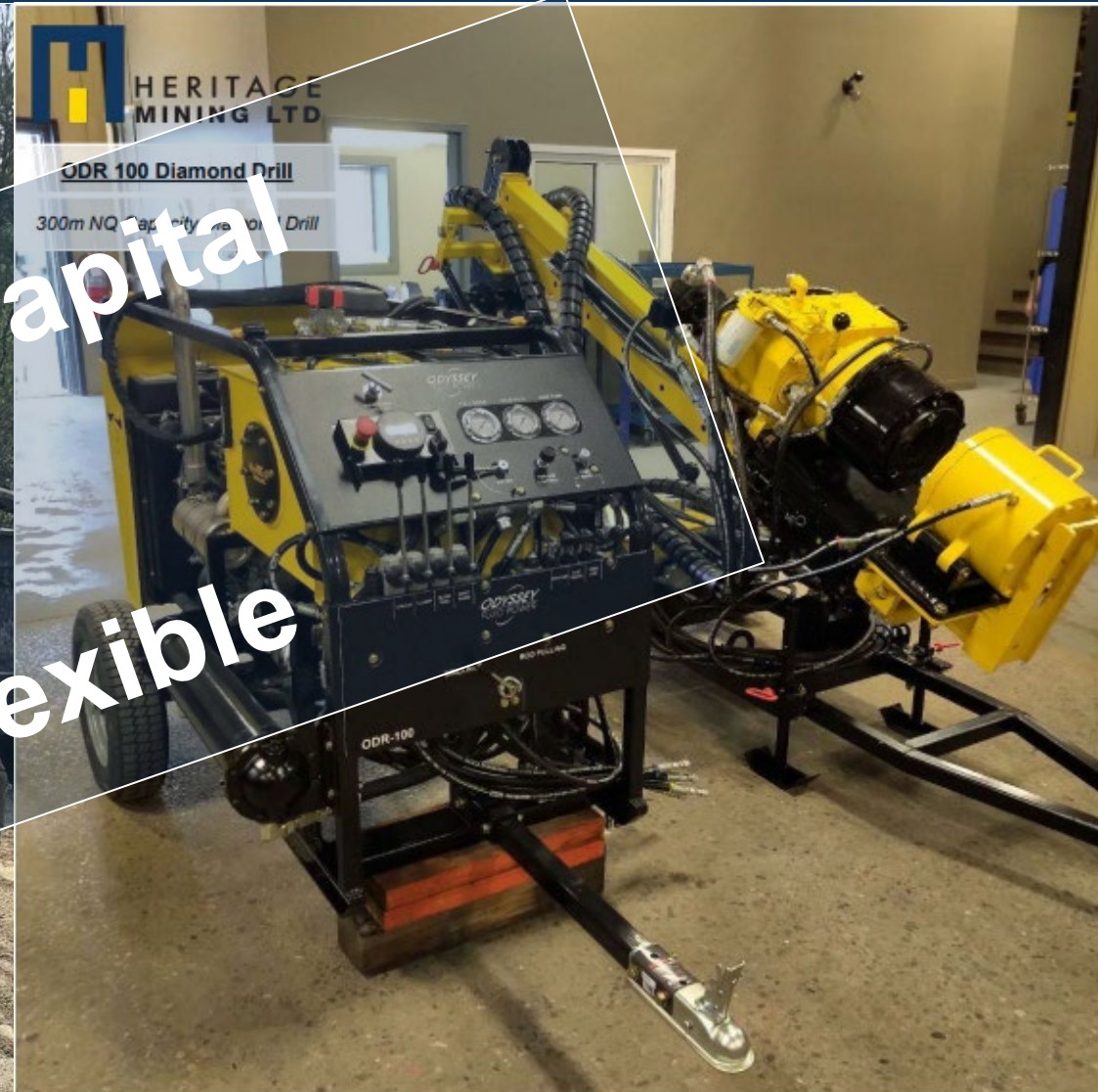
* Please see website for additional strategic advisors



Ontario Project Portfolio In House Drill Team



D5 Dozer



Conserve Capital
Stay Flexible

Summary

Melba – Ontario's next Multi-Million Oz Gold Discovery in the making

First Modern Confirmation & Expansion program since 1937

Capitalized at a premium with significant insider participation

Large Land Package ~4,142 Ha

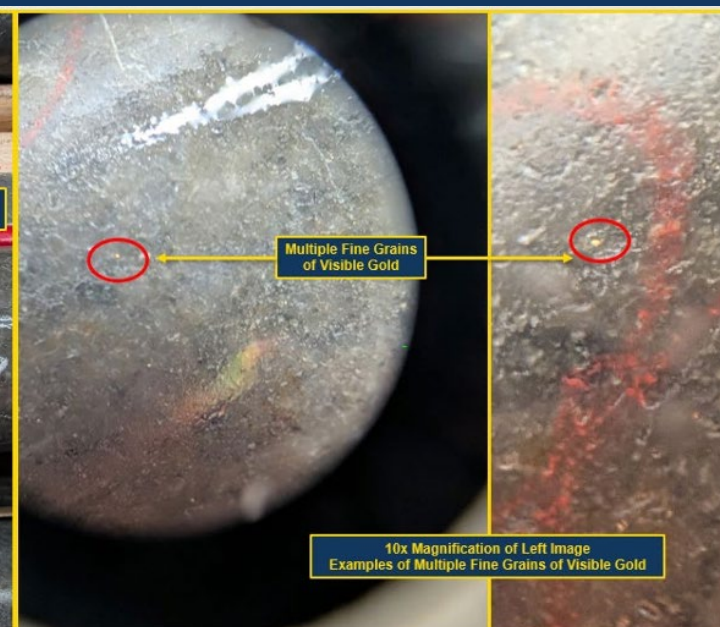
On Trend with +1Moz Au Deposits and Historic Mines

Proven Management and Board

In House Drilling Operation

7.7M Market Cap, C\$0.035 per share

Significant Near Term Exploration Upside

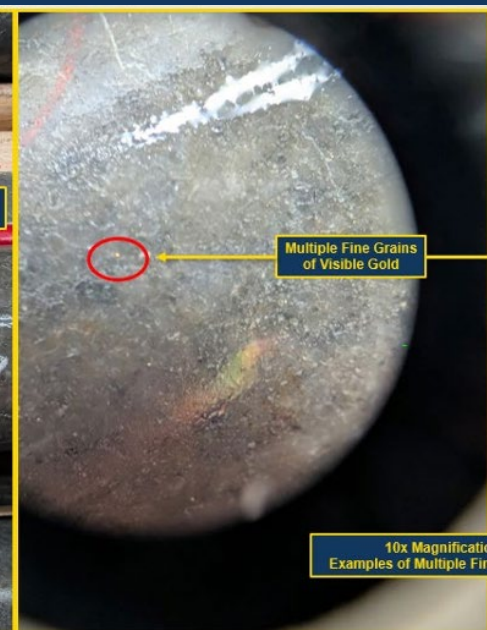
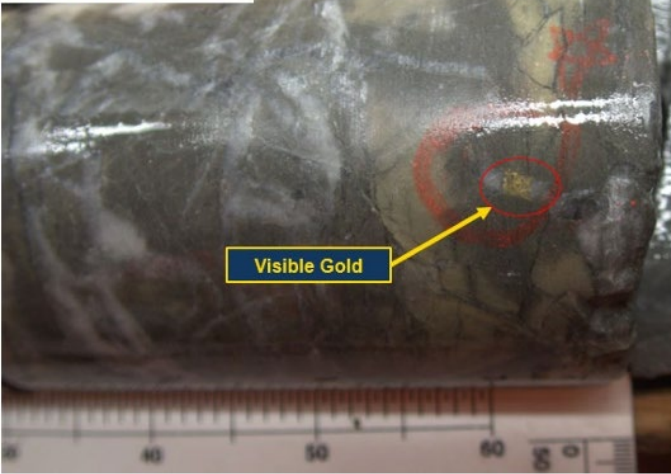


Appendix

Melba – Ontario's next Multi-Million Oz Gold Discovery in the making



Melba Project
Visible Gold
ML3900-002 from 73.30m



10x Magnification of Left Image
Examples of Multiple Fine Grains of Visible Gold

Melba Mine – Historical Map



Melba Property
Northeastern Ontario Canada
Timmins/Kirkland Lake Gold Camp
Historical Map

Melba Gold Mine

Heritage Historical
Drilling Confirmation Area

The Blue Vein

Rock Pile Up to 2.23g/t

Contact Vein

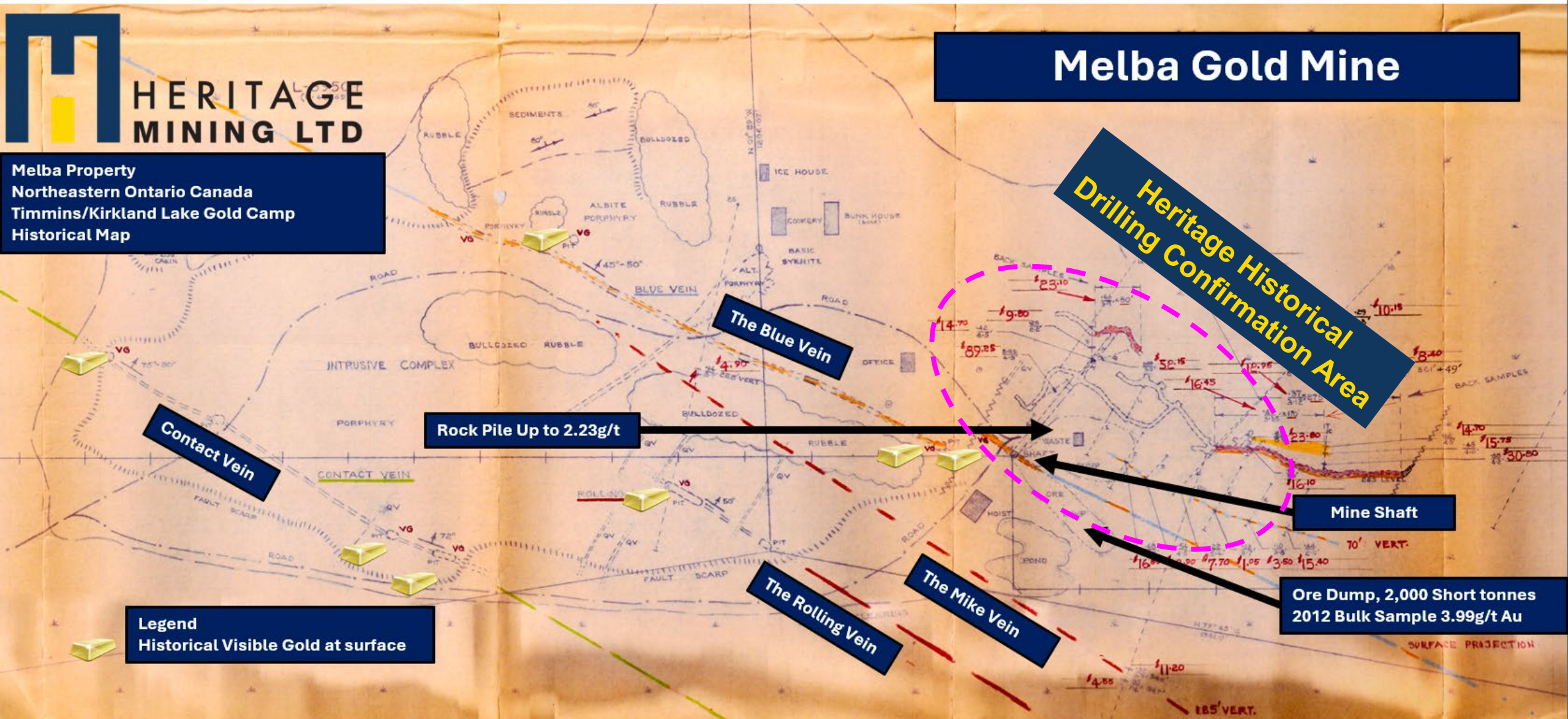
Mine Shaft

Ore Dump, 2,000 Short tonnes
2012 Bulk Sample 3.99g/t Au

The Rolling Vein

The Mike Vein

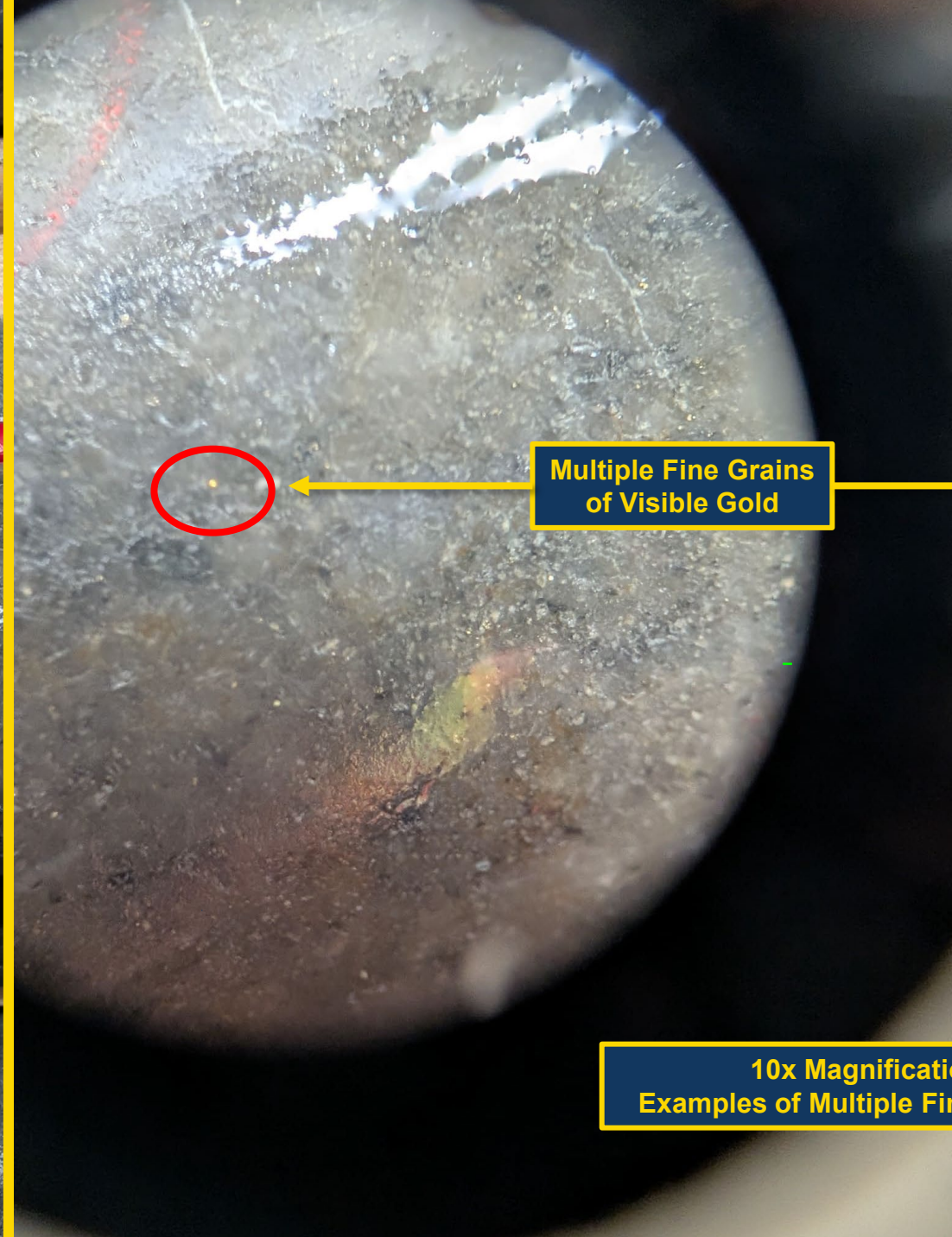
Legend
Historical Visible Gold at surface



Melba Project
Visible Gold
ML3840-001 from ~31m



Multiple Fine Grains
of Visible Gold



Multiple Fine Grains
of Visible Gold



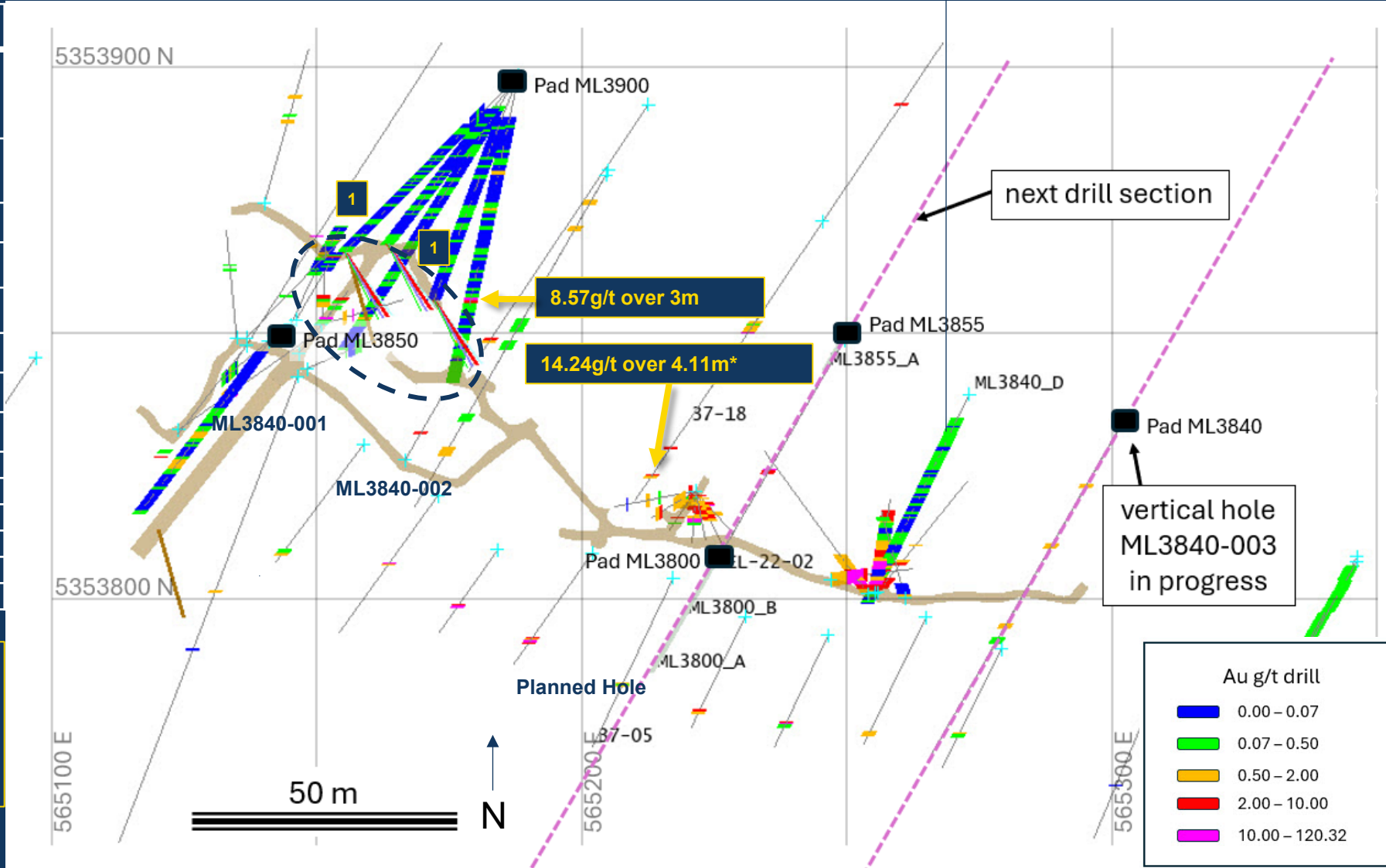
10x Magnification of Left Image
Examples of Multiple Fine Grains of Visible Gold

Hole ID	Au g/t Interval Highlights
ML3900-002	8.57g/t Au 3m from 72m Finished in Au Mineralization Visible Gold noted in core
ML3850-003	9.06g/t Au 1m from 52m, Terminated at underground workings
ML3840-001	1.45g/t Au over 4.5m from 66m
UG-Q-60:	34.29 g/t Au 1.4m from 4.81m*
UG-T-60:	14.58 g/t Au 1.98m from 8.53m*
UG-R-60:	2.72 g/t Au 2.71m from 4.20m*
UG-S-60:	4.42 g/t Au 1.52m from 3.35m*
UG-Y-60:	25.64 g/t Au 4.57m from 12.04m*
UG-B-60	6.95g/t Au 13.41m from 0.61m*
UG-C-60	5.46g/t Au 15.39m from 1.07m*
UG-E-60	4.05g/t Au 9.85m from start of hole*
UG-F-60	3.47g/t Au 4.42m from 0.88m*
ML3840-001	1.45g/t Au over 4.5m from 66m
37-18	14.24g/t Au 4.11m from 123.90m*

*Historic Drilling Selectively Sampled or not available

1 Underground workings historical results in area of ML3850-003:

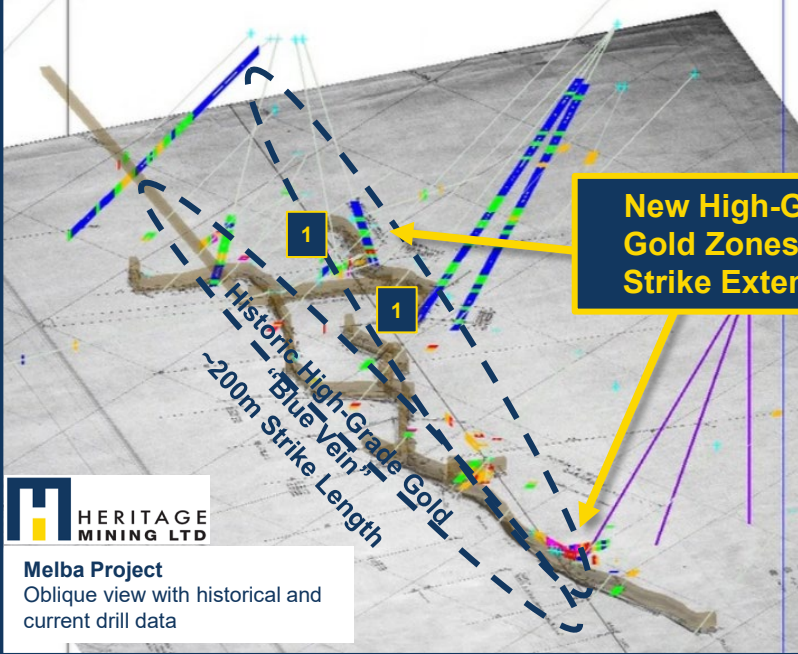
- **204 E Zone: 13.31g/t Au** over 0.91m for 8.54m along the stope
- **204 W Zone 5.88g/t Au** over 0.91m for 8.54m along the stope



Melba Project
 Cross Section Melba Mine – 2026
 Current Drill Pad

Hole ID	Au g/t Interval Highlights	Zone
UG-B-60	6.95g/t Au 13.41m from 0.61m*	New High-Grade Gold Zone
UG-C-60	5.46g/t Au 15.39m from 1.07m*	
UG-E-60	4.05g/t Au 9.85m from start of hole*	
UG-F-60	3.47g/t Au 4.42m from 0.88m*	
ML3840-001	1.45g/t Au over 4.5m from 66m	
37-18	14.24g/t Au 4.11m from 123.90m*	

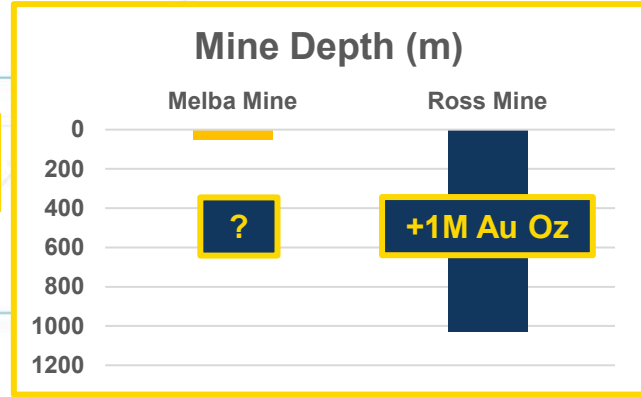
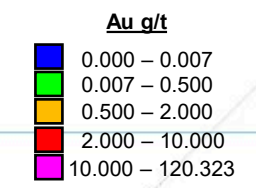
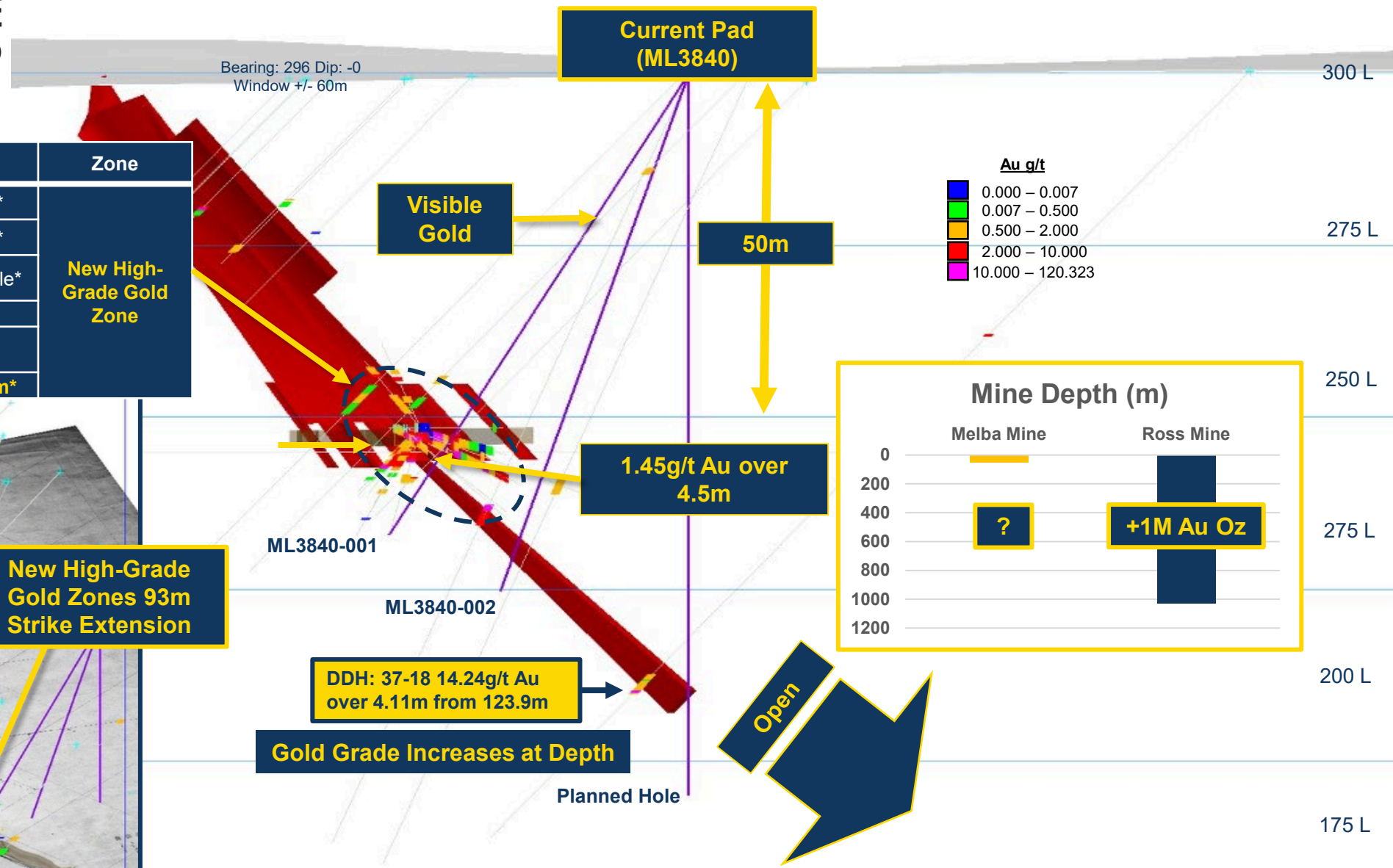
*Historic Drilling Selectively Sampled or not available



Melba Project
 Oblique view with historical and current drill data

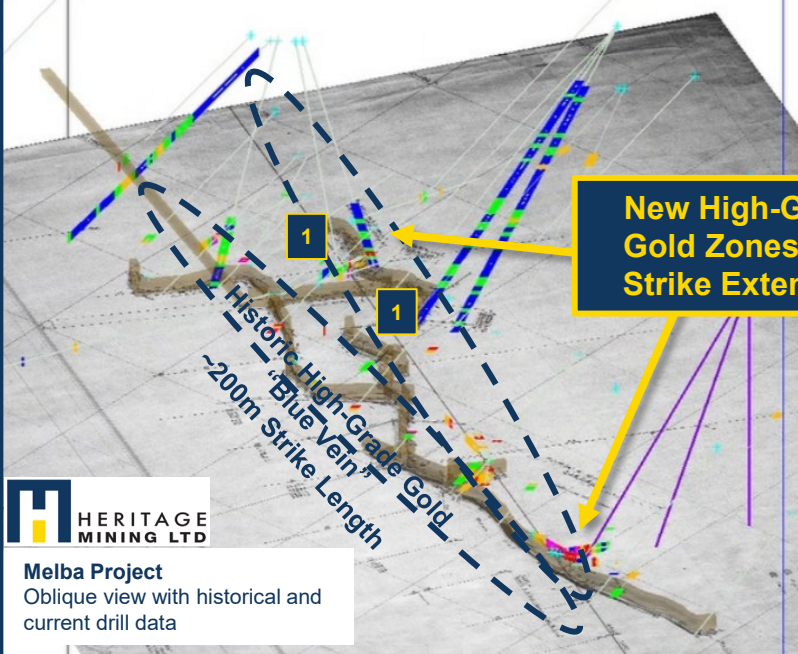
1 Underground workings historical results in area of ML3850-003:

- **204 E Zone: 13.31g/t Au** over 0.91m for 8.54m along the stope
- **204 W Zone 5.88g/t Au** over 0.91m for 8.54m along the stope



Hole ID	Au g/t Interval Highlights	Zone
UG-B-60	6.95g/t Au 13.41m from 0.61m*	New High-Grade Gold Zone
UG-C-60	5.46g/t Au 15.39m from 1.07m*	
UG-E-60	4.05g/t Au 9.85m from start of hole*	
UG-F-60	3.47g/t Au 4.42m from 0.88m*	
ML3840-001	1.45g/t Au over 4.5m from 66m	
37-18	14.24g/t Au 4.11m from 123.90m*	

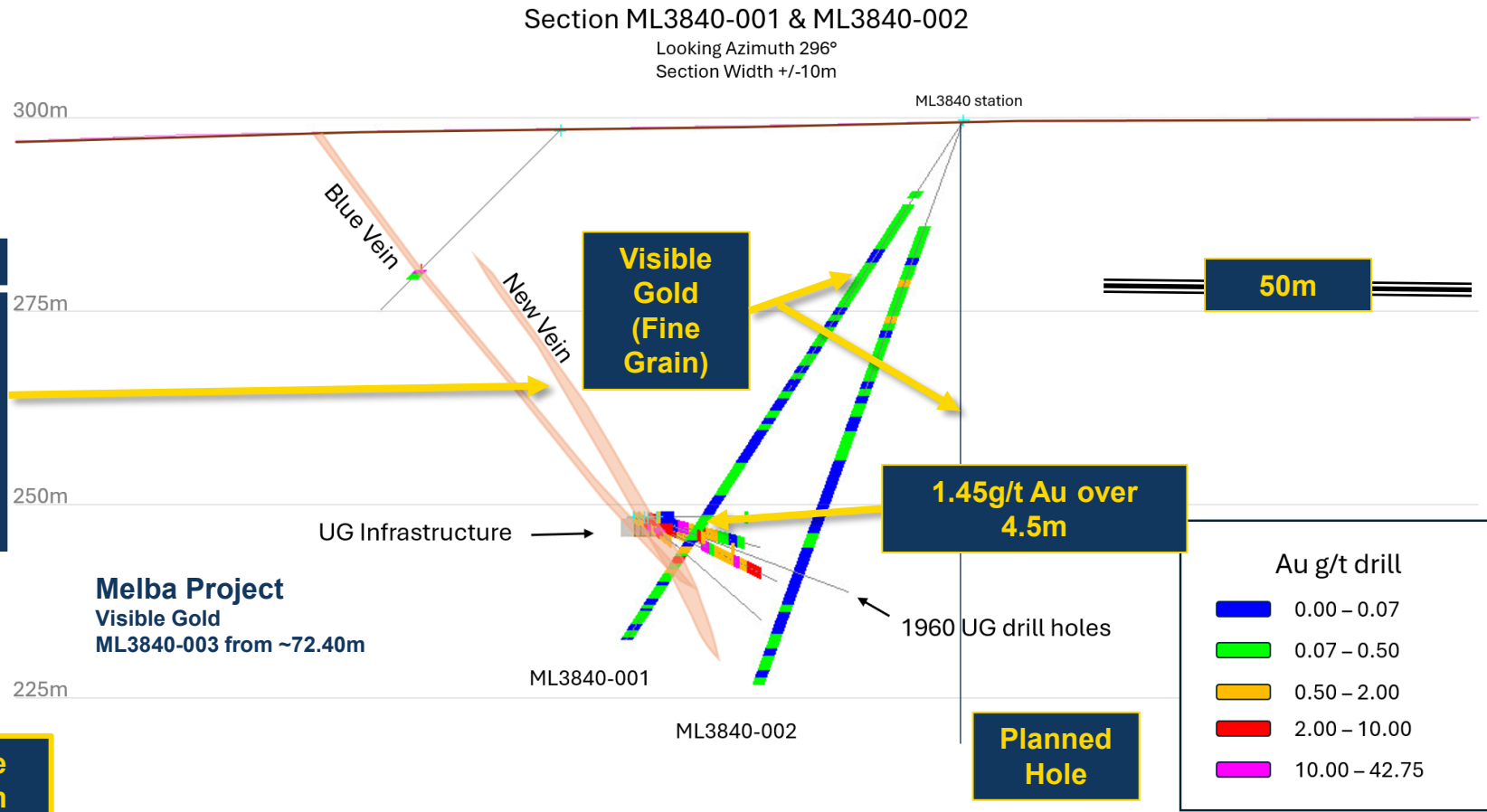
*Historic Drilling Selectively Sampled or not available



Melba Project
 Oblique view with historical and current drill data

1 Underground workings historical results in area of ML3850-003:

- 204 E Zone: **13.31g/t Au** over 0.91m for 8.54m along the stope
- 204 W Zone **5.88g/t Au** over 0.91m for 8.54m along the stope



Melba Project – March 2026
 Cross Section
 Looking Azimuth 300 Melba
 Section Width +/-20m

275m

250m

UG Infrastructure

Planned Holes

Intercept in DDH 37-18 is ~17m behind the section

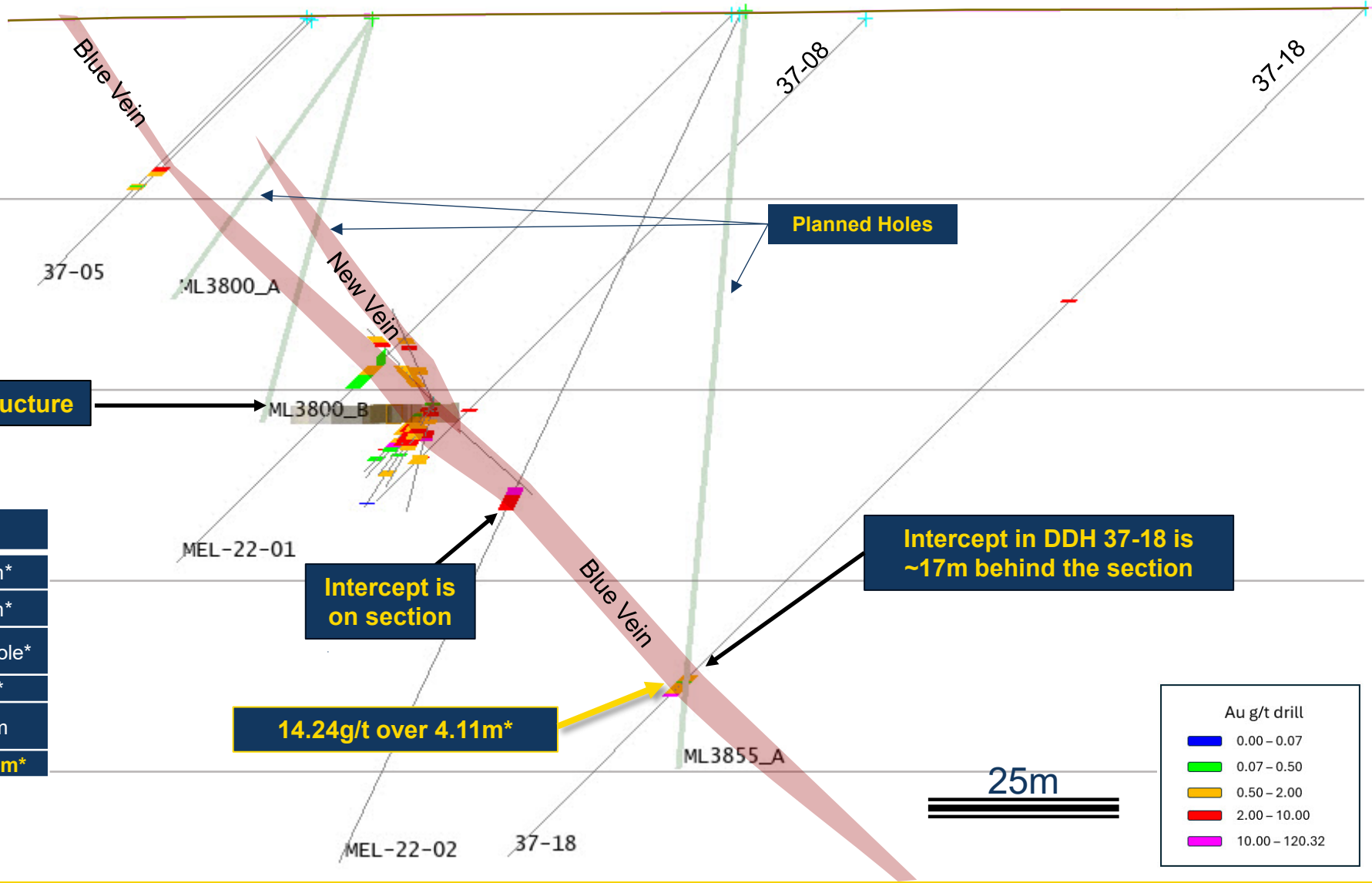
Intercept is on section

14.24g/t over 4.11m*

25m

Au g/t drill	
■	0.00 – 0.07
■	0.07 – 0.50
■	0.50 – 2.00
■	2.00 – 10.00
■	10.00 – 120.32

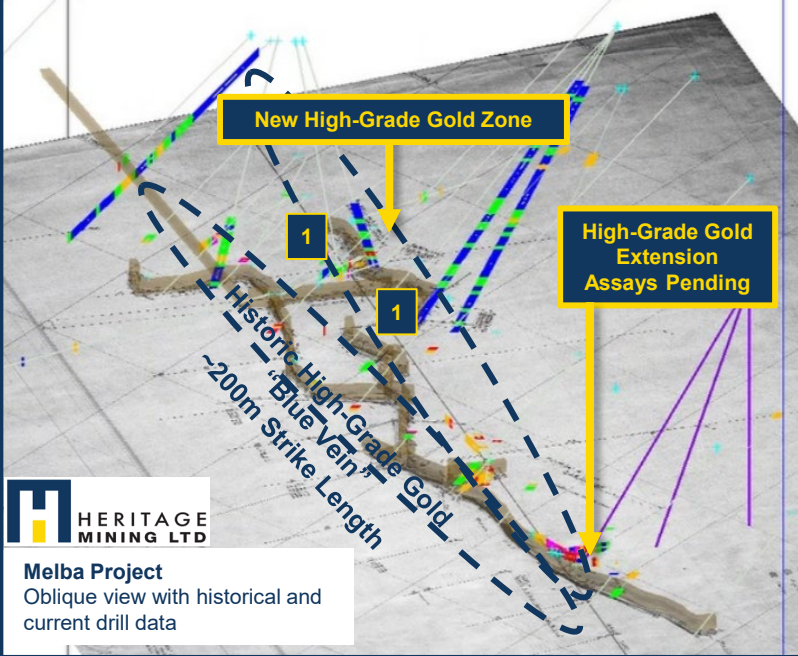
Hole ID	Au g/t Interval Highlights
UG-B-60	<u>6.95g/t Au 13.41m</u> from 0.61m*
UG-C-60	<u>5.46g/t Au 15.39m</u> from 1.07m*
UG-E-60	<u>4.05g/t Au 9.85m</u> from start of hole*
UG-F-60	3.47g/t Au 4.42m from 0.88m*
ML3840-001	1.45g/t Au over 4.5m from 66m
37-18	<u>14.24g/t Au 4.11m</u> from 123.90m*



Melba Project
 Cross Section Melba Mine – 2026
 Current Drill Pad

Hole ID	Au g/t Interval Highlights	Zone
UG-B-60	6.95g/t Au 13.41m from 0.61m*	New High-Grade Gold Zone
UG-C-60	5.46g/t Au 15.39m from 1.07m*	
UG-E-60	4.05g/t Au 9.85m from start of hole*	
UG-F-60	3.47g/t Au 4.42m from 0.88m*	
MEL-22-02		
37-18	14.24g/t Au 4.11m from 123.90m*	

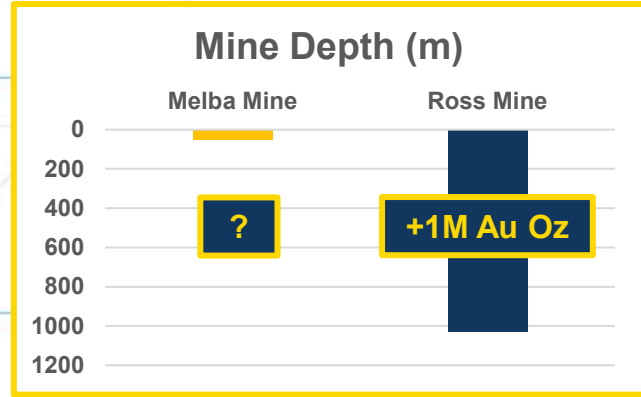
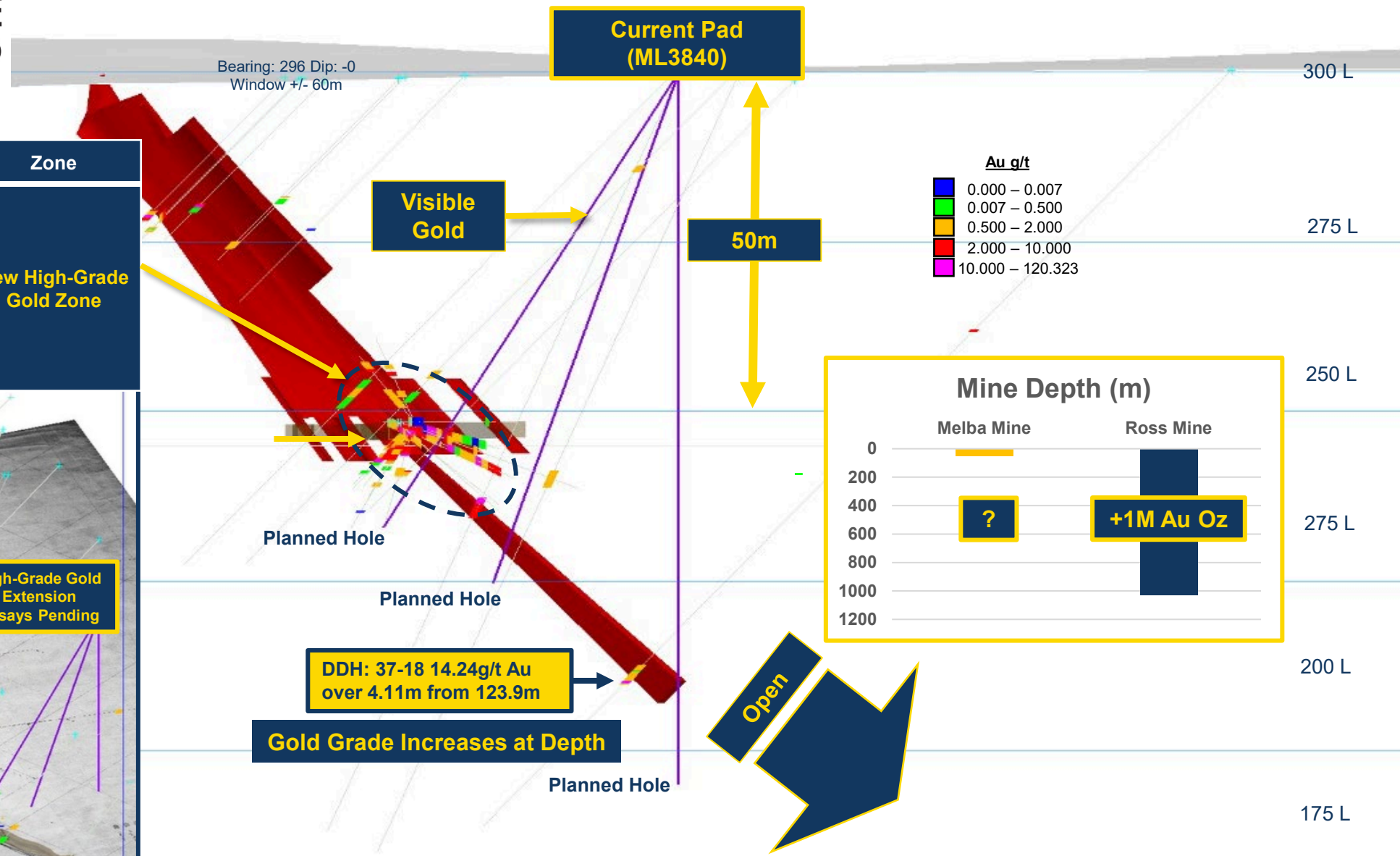
*Historic Drilling Selectively Sampled or not available



HERITAGE MINING LTD
 Melba Project
 Oblique view with historical and current drill data

1 Underground workings historical results in area of ML3850-003:

- 204 E Zone: 13.31g/t Au over 0.91m for 8.54m along the stope
- 204 W Zone 5.88g/t Au over 0.91m for 8.54m along the stope



Bearing: 296 Dip: -0
 Window +/- 60m

300 L
 275 L
 250 L
 200 L
 175 L



Mag Survey – Ontario

Melba Mine – High-Grade Historical Au Mine
~4,142Ha

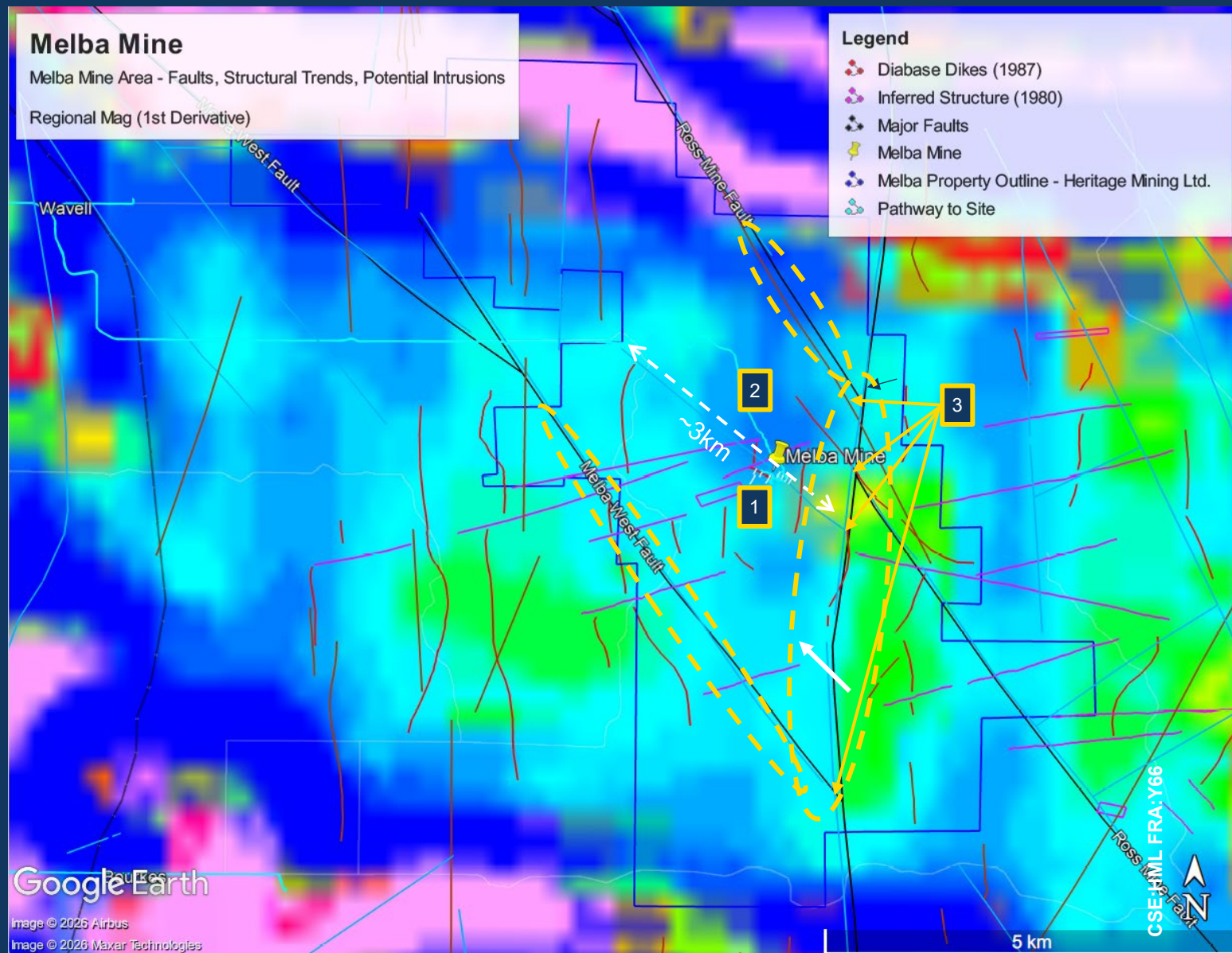
2026 Planned Program:

Rapidly Develop Melba Mine Footprint to Multi Million AuOz Target Potential

2026 Large Scale Exploration Program Targeting Program

- Diamond Drilling
- Geophysics
- Geochemistry

Leveraging Historical for the First Modern Confirmation & Expansion program since 1937



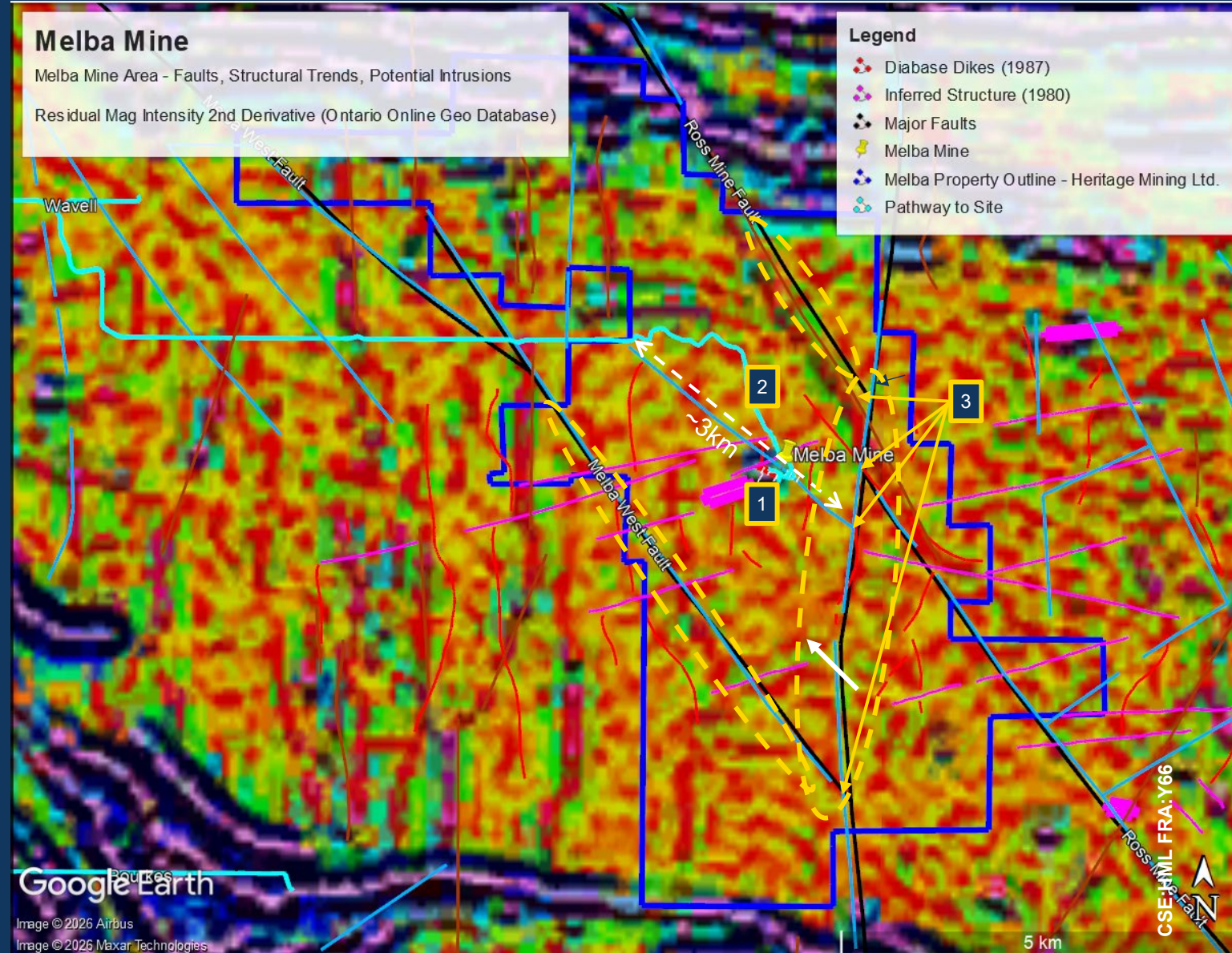


Investment Opportunity

Melba Mine – High-Grade Historical Au Mine
~4,142Ha

Fully Funded In House Drilling and Exploration Program:

1. Active Drilling Confirming Historical and new High-Grade Zones
2. Significant Strike Extension +3km
3. Multiple High Priority Areas of Interest



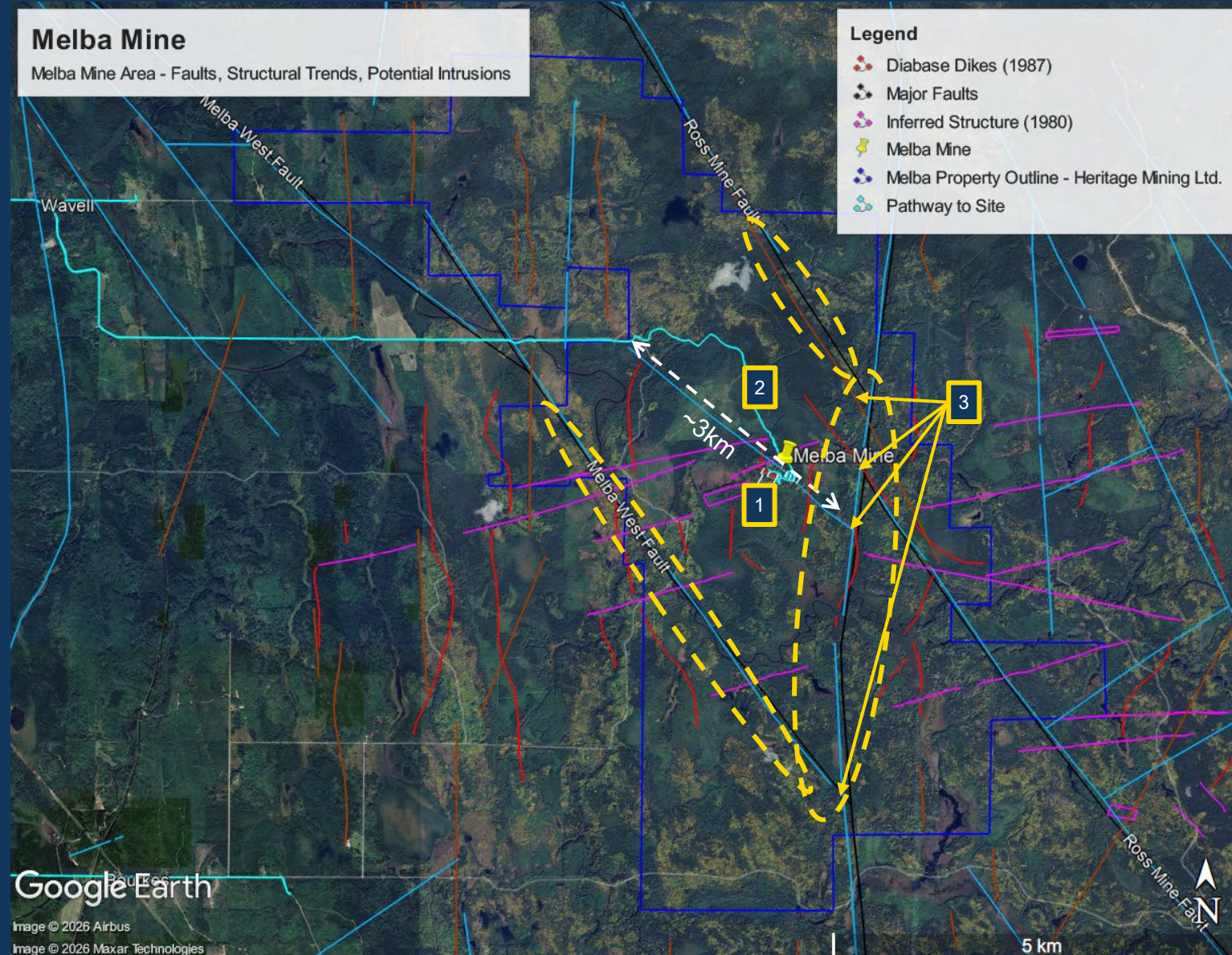


Investment Opportunity

Melba Mine – High-Grade Historical Au Mine
~4,142Ha

Fully Funded In House Drilling and Exploration Program:

1. Active Drilling Confirming Historical and new High-Grade Zones
2. Significant Strike Extension +3km
3. Multiple High Priority Areas of Interest



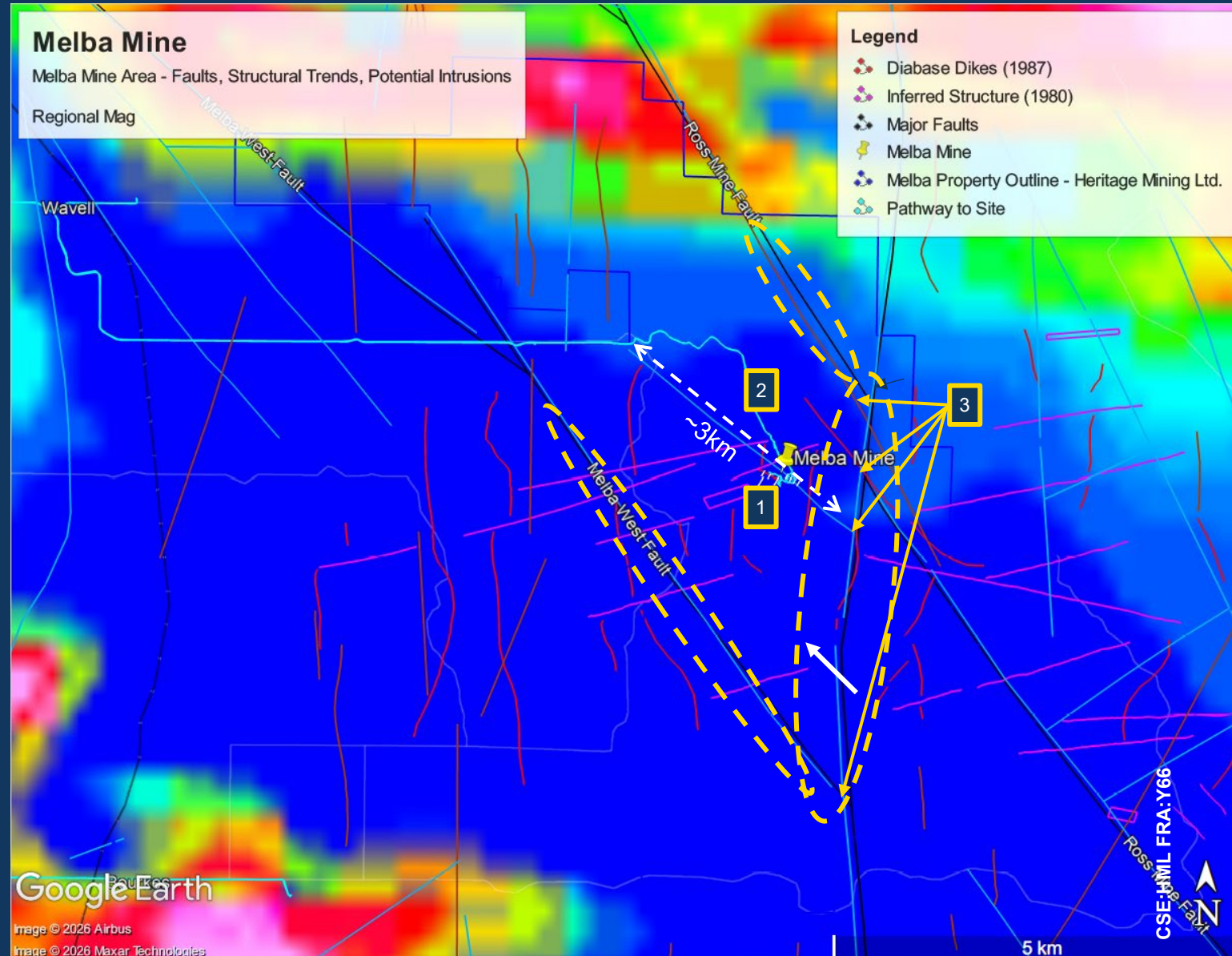


Investment Opportunity

Melba Mine – High-Grade Historical Au Mine
~4,142Ha

Fully Funded In House Drilling and Exploration Program:

1. Active Drilling Confirming Historical and new High-Grade Zones
2. Significant Strike Extension +3km
3. Multiple High Priority Areas of Interest



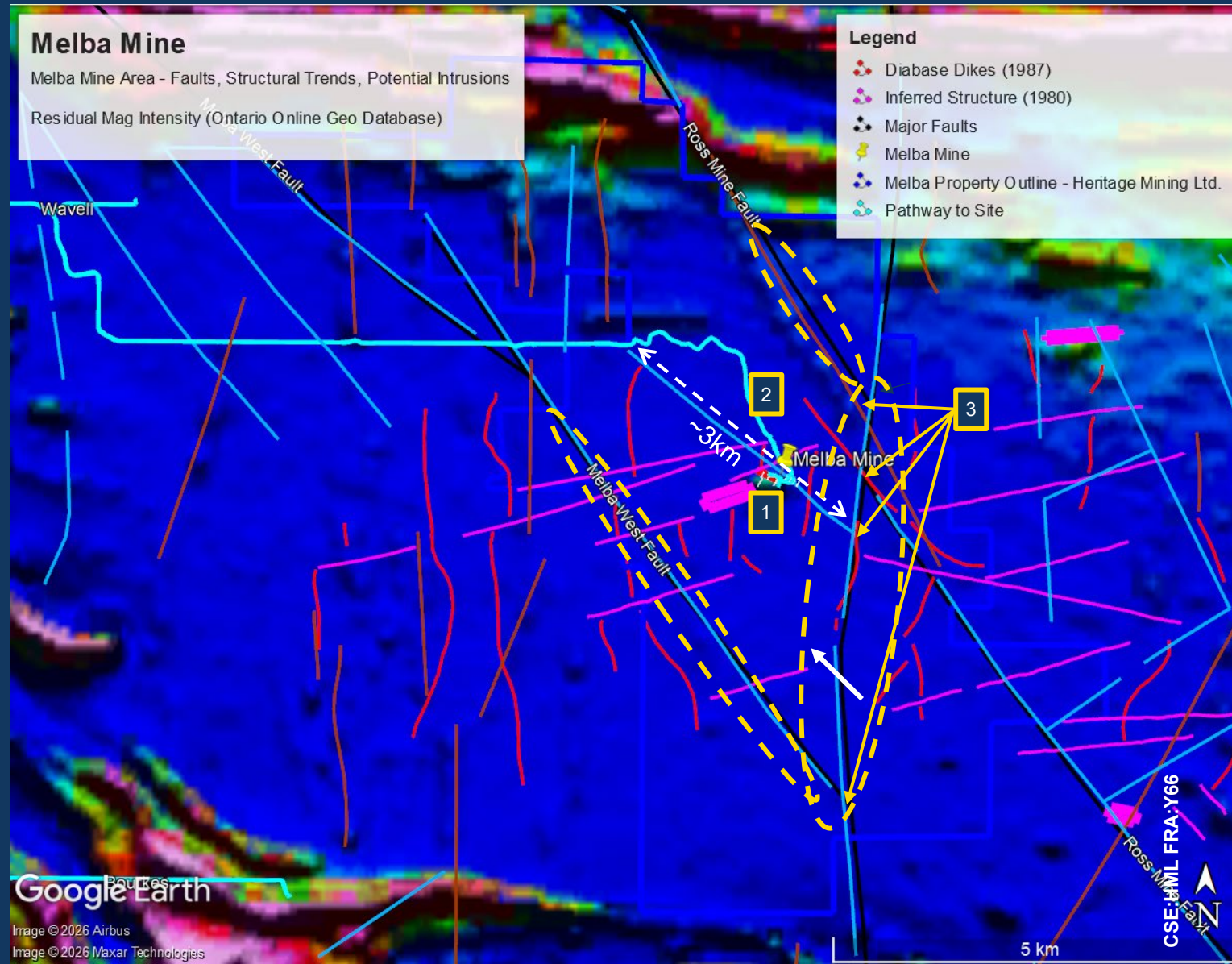


Investment Opportunity

Melba Mine – High-Grade Historical Au Mine
~4,142Ha

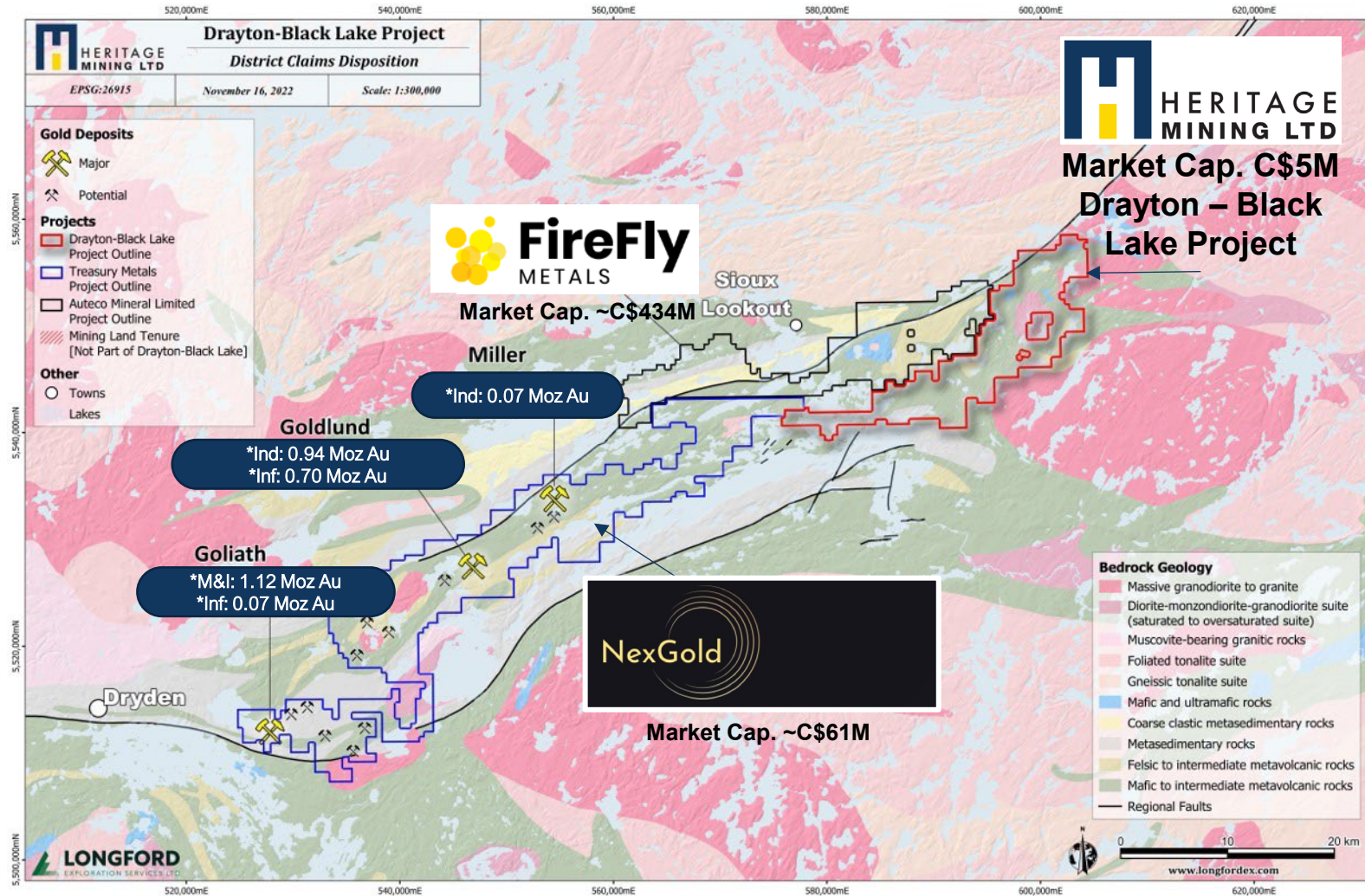
Fully Funded In House Drilling and Exploration Program:

1. Active Drilling Confirming Historical and new High-Grade Zones
2. Significant Strike Extension +3km
3. Multiple High Priority Areas of Interest



Drayton-Black Lake Project Area

District Scale Discovery Potential in NW Ontario, Canada



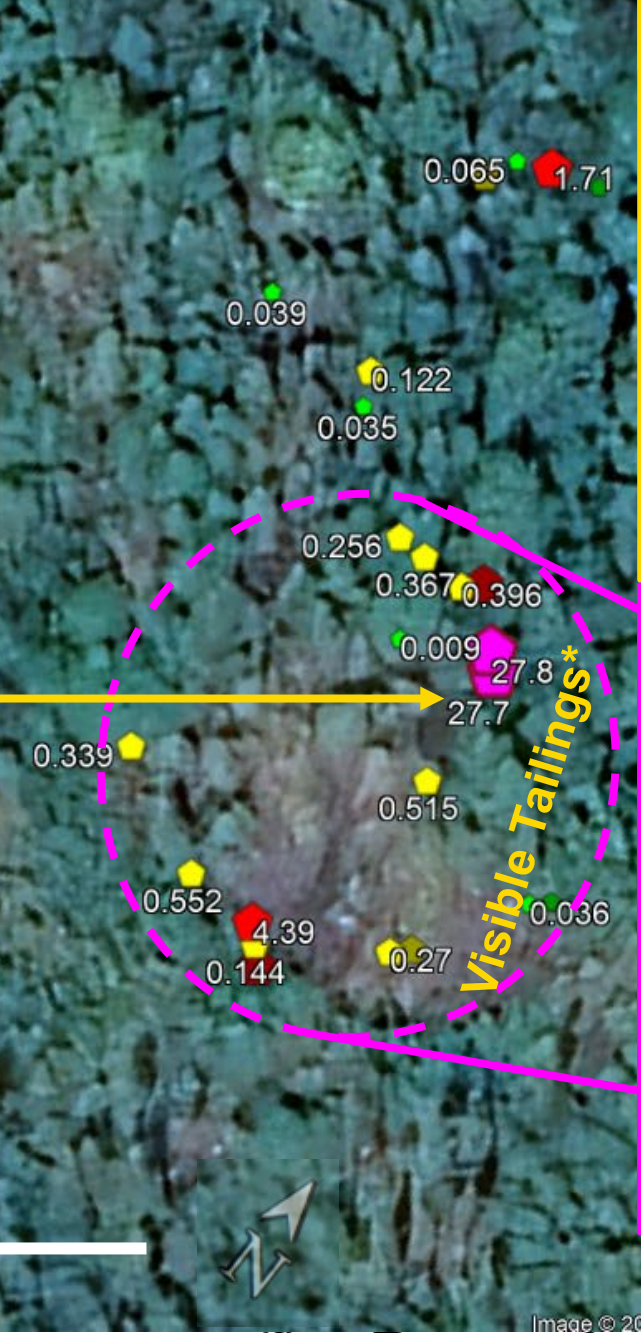
Multiple Deposit Potential

**Drayton – Black Lake
Split Lake Area – Tailings Samples**

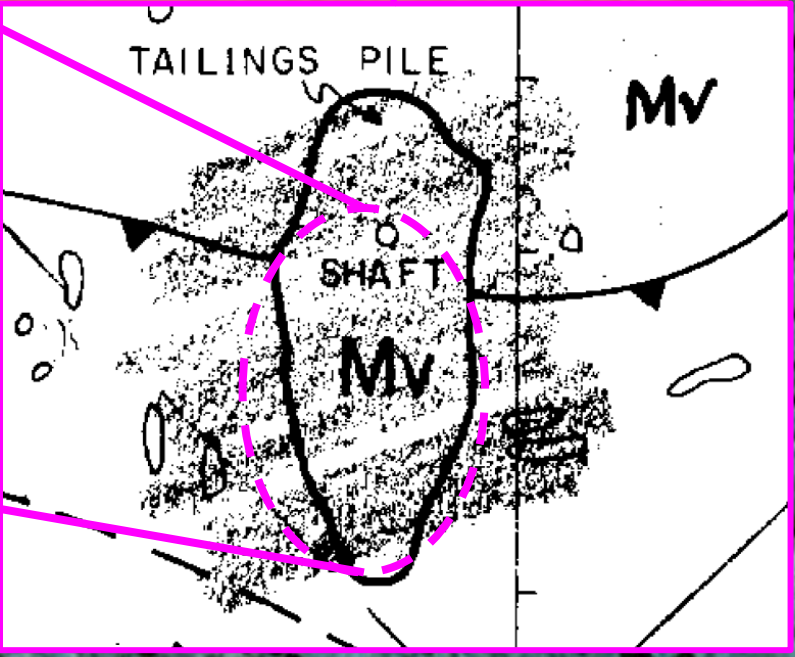
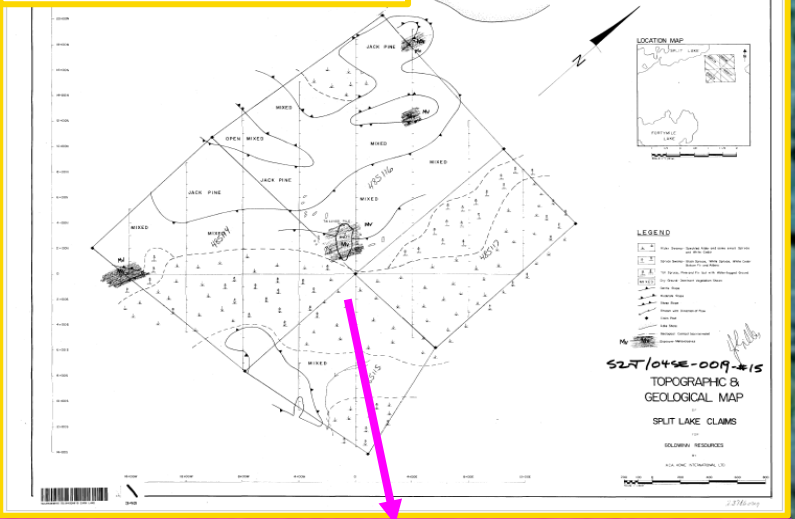
- Rock Pile Sample Highlights:**
- Average Grade **3.72g/t Au** of **18 samples** included in the **visible tailings pile**
 - All 26 Samples registered gold



Split Lake: 27.7g/t Au in rock pile Sample



**Drayton – Black Lake
Split Lake Area – Historic Map**



Split Lake – Visible Tailings Pile*

40m

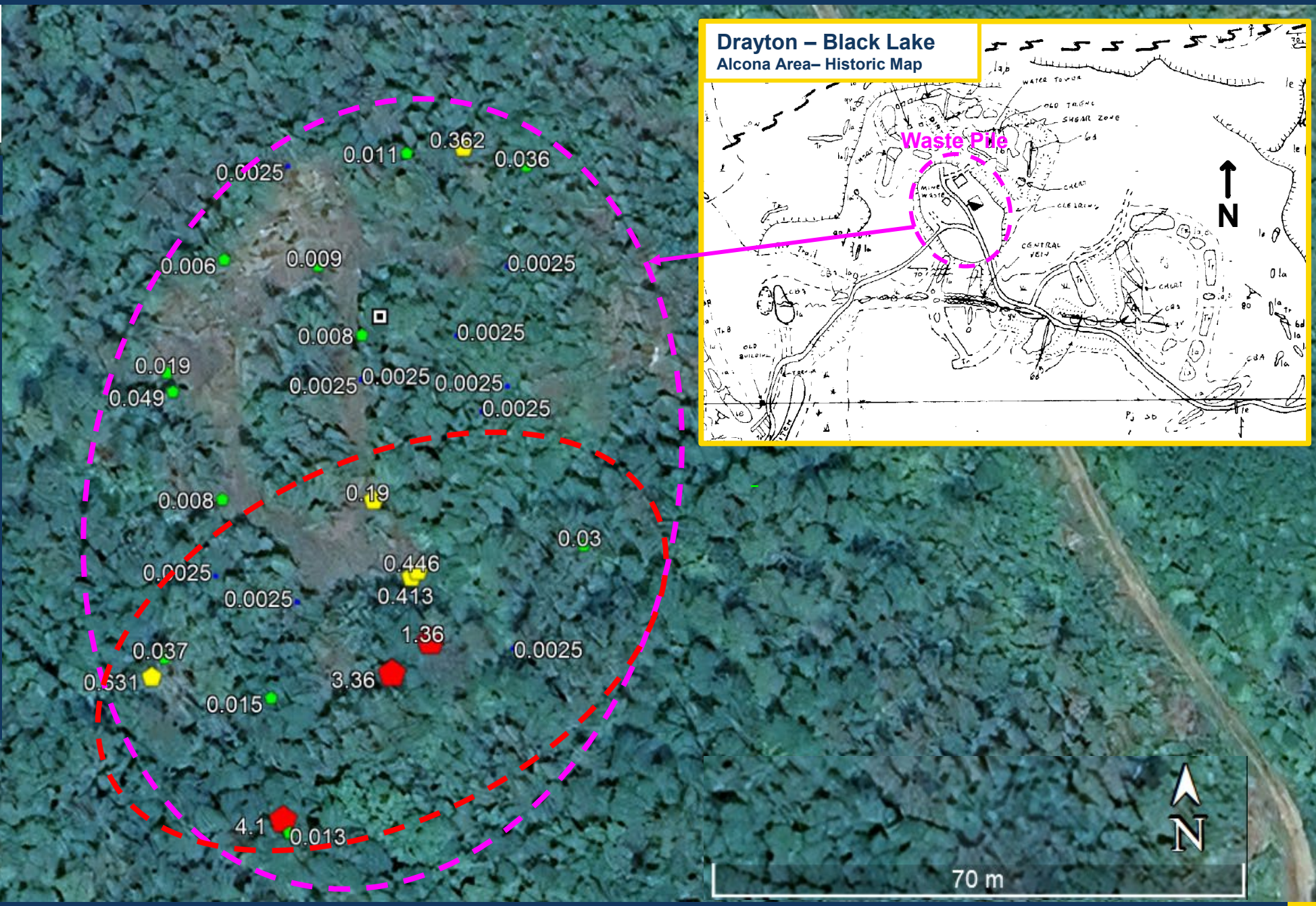
Drayton – Black Lake
Alcona Area – Tailings Samples

Of the 30 samples taken, 20 Samples registered gold values from 0.006g/t Au up to 4.1g/t Au, average grade ~0.53g/t Au* on ~40,000 tonnes of mining waste pile**

Approximately half of the pile returned higher than average gold values supporting additional systematic sampling in this area.

~20,000 tonnes of mining waste pile returned an average grade of ~0.96g/t Au, 12 samples all registered gold values from 0.013g/t up to 4.1g/t Au*(Figure 2,3)

*Grabs samples off the pile returned



DBL – Zone 3 – Summary

The Next District-Scale Discovery in NW Ontario, Canada

Located about the contact between granitic intrusion (Lake of Bays Batholith) and mafic metavolcanic rocks (Sioux Lookout Greenstone Belt).

2025 Exploration Program confirmed a broad zone of gold mineralization within a Mega-Quartz Vein System. The ~74m wide quartz vein system (true width unknown) associated with a magnetic anomaly extends for ~4km along strike length and up to 200m in width.

2024 Diamond Drilling Program at Zone 3 has identified intrusion-related gold mineralization; a style of gold mineralization that has not been historically recognized within the Drayton-Black Lake Project Area.

Intrusion-related gold mineralization provides potential for large-tonnage gold deposits in the project area providing an additional focus for exploration efforts at Drayton-Black Lake, as historical exploration programs have targeted greenstone-hosted orogenic-style gold occurrences. The granite is a quartz-feldspar-biotite body overprinted by commonly well-developed tectonic foliation. This granitic batholith is at least 30 km across in plan-view, based on the Ontario Provincial geologic map.

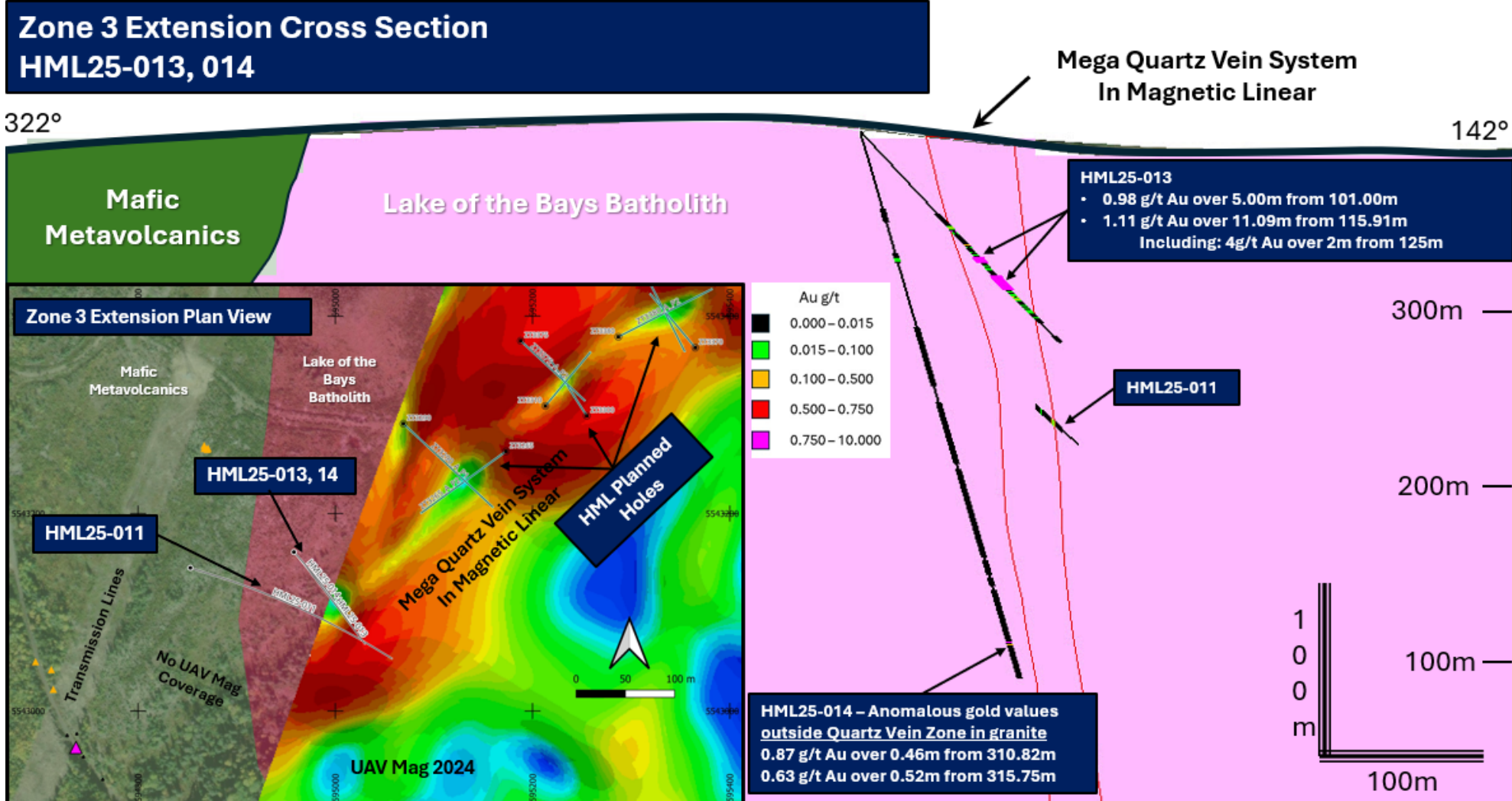
Hole_ID	Target	From(m)	To(m)	Au g/t	Length(m)	Composite
HML25-013	Zone 3	101.11	106.00	0.98	5.00	5 m of 0.98 g/t Au
HML25-013	Zone 3	115.91	127.00	1.10	11.09	11.09 m of 1.10 g/t Au
Incl.	Zone 3	125.00	127.00	4.00	2.00	2.0 m of 4.00 g/t Au



HML25-013 Box 29, 126.66m to 126.45m Mineralization Photo (4g/t Au over 2m from 125m interval)

DBL – Zone 3

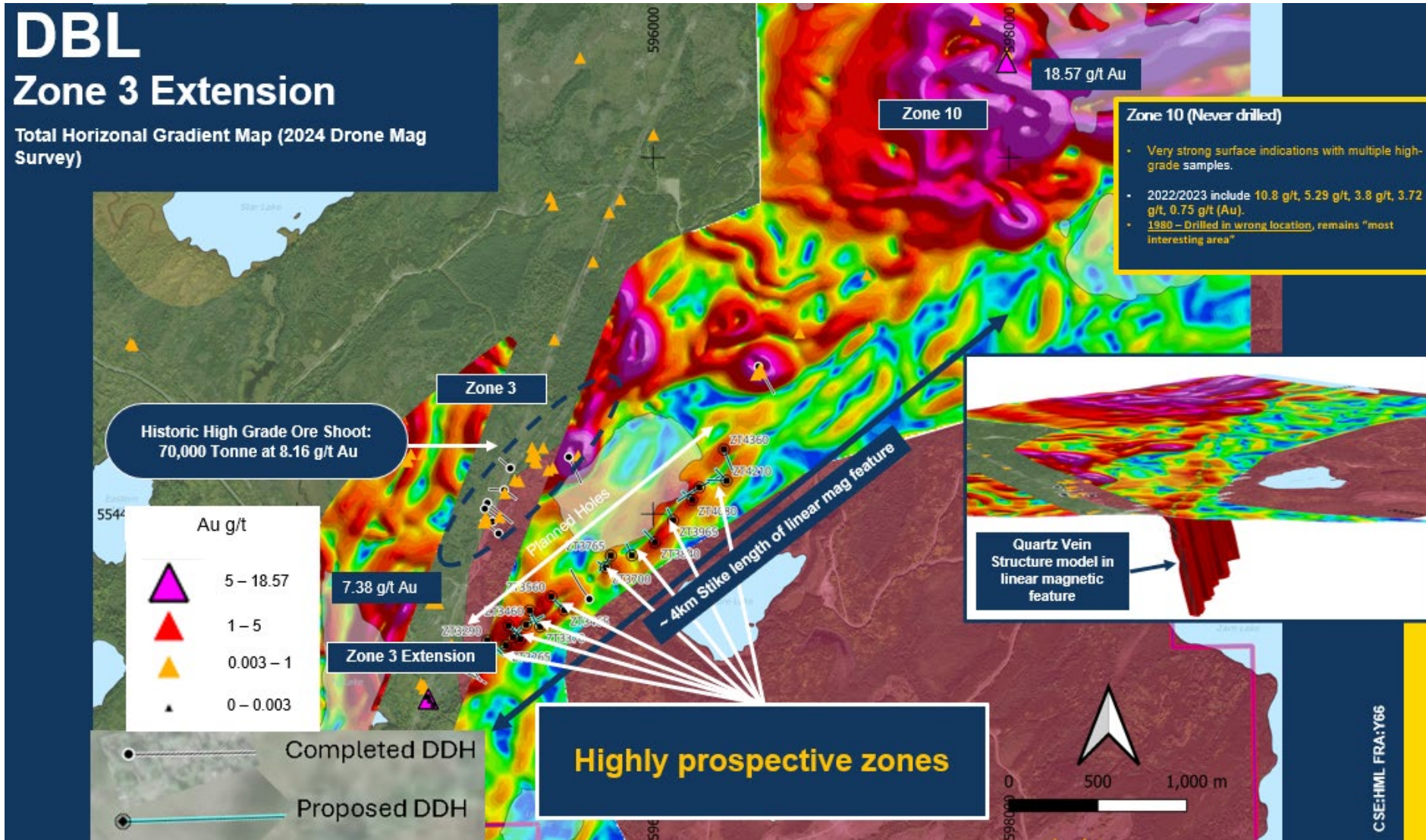
The Next District-Scale Discovery in NW Ontario, Canada



HML25-013, 014 Cross section with 2024 Drone Mag Survey

DBL – Zone 3

The Next District-Scale Discovery in NW Ontario, Canada



Showing the completed and proposed holes testing the northeast-southwest trending magnetic lineament

**Zone 3 Extension 2025 Fall Drill Program
with 2024 Drone Mag Survey**

2025 Exploration Results

Confirm Anomalous Gold, structurally controlled over 1km in strike length

DDH25-016: 0.10g/t Au over 8m from 88m including (0.12g/t Au over 1m from 88m, 0.23g/t Au over 2m from 91m, 0.13g/t Au over 1m from 95m) and 1.03g/t Au over 1m from 102m

DDH25-017: 0.28g/t Au over 1m from 72m, 0.90g/t Au over 1m from 76m, 0.45g/t Au over 2m from 82m

DDH25-018 : Results Pending

Soil Program Asays Pending

**Historic High Grade Ore Shoot:
70,000 Tonne at 8.16 g/t Au (1980)
Not 43-101 Compliant**

~4km Long Mag Feature

2024 Diamond Drilling

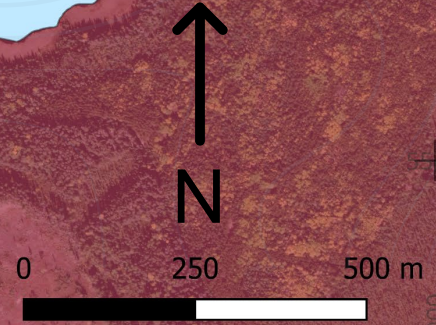
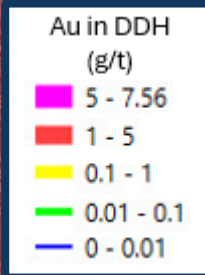
Results Pending

Anomalous Gold Values with the Mega Quartz Vein Structure

**HML25-13: 0.98g/t Au over 5m from 101m and
1.11g/t Au over 11.09m from 115.91m**

7.38g/t Au Rock Sample

Anomalous Gold Values with the Mega Quartz Vein Structure



DBL – Zone 3

The Next District-Scale Discovery in NW Ontario, Canada

Zone 3 - Geology

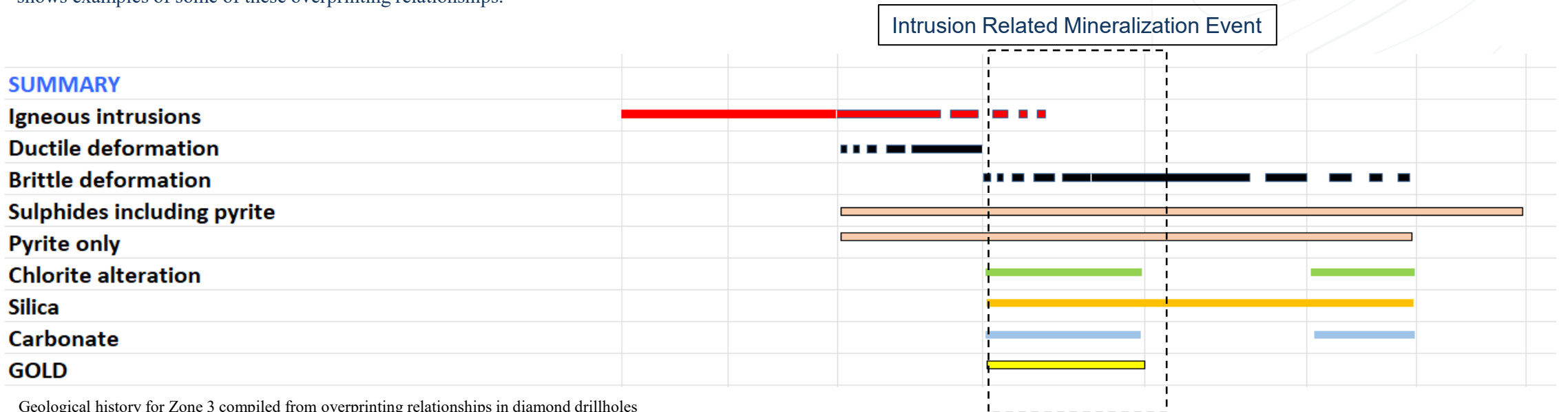
Decimeter- to meter-wide quartz K-feldspar pegmatitic dykes cut predominantly through the granite but are also present, albeit less prevalently, in the mafic metavolcanic host rock adjacent to the batholith. These pegmatitic dykes form a sheeted array across the batholith contact with the mafic host-rocks and are somewhat similar in appearance to the granite.

The markedly different rheological properties in the two rock masses have resulted in preferential fracturing and localization of the pegmatite dykes in the granite. Significantly fewer dykes have been emplaced into the adjacent mafic rocks due to the ductile character of the mafic host-rocks precluding formation of a fracture network required for dyke ingress.

When the pegmatite dykes do cut the mafic host-rocks, they tend to be ductilely folded and/or boudinaged, and are significantly thinner (centimeter- to decimeter-width) than in the granite.

Fracturing of rheologically favourable pegmatite dykes, including along pegmatite-dyke contacts, has localised deposition of quartz-dominated vein suites in the fracture-permeability network. These quartz veins are associated with the sulphide and gold mineralization at Zone 3.

The complex deformation-intrusion-mineralization history represented at Zone 3 has been compiled in Figure 6 and highlights where mineralization has been introduced into the rock mass. Figure 7 shows examples of some of these overprinting relationships.



Geological history for Zone 3 compiled from overprinting relationships in diamond drillholes
Appendix – Detailed Geological History

DBL- Zone 3 Extension

2024 Prospecting Program – 2024

Easy Access – Road accessible – Via Logging Roads

2024 Zone 3 drill locations



Mineralized Granite
(Pyrite, Sulfides)



Mineralization in mafic volcanics
(Arsenopyrite)



Mineralization in granite (Pyrite, sulfides)



Quartz Vein and sulfide mineralization associated with
pegmatites cutting through the granite intrusion



Mineralization in mafic metavolcanic
(Molybdenite sulfides quartz vein)



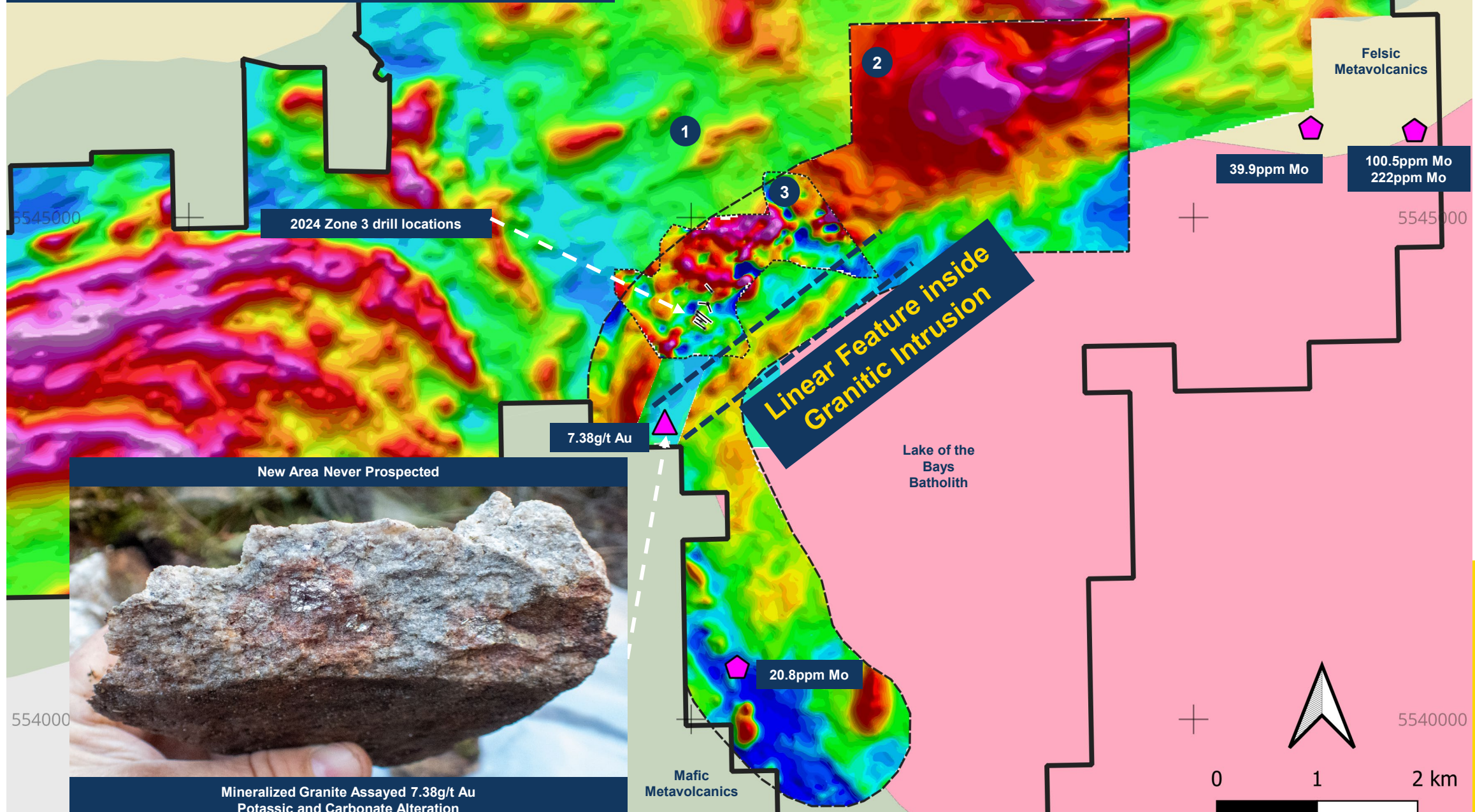
1km

DBL- Zone 3 Extension

2024 Prospecting Program and TMI (2024 and 2024 Data)

Easy Access – Road accessible – Via Logging Roads

- 1. 2022 Heli MAG
- 2. 2024 UAV MAG
- 3. 2024 Pilot 1980 Ground MAG



2024 Zone 3 drill locations

Linear Feature inside Granitic Intrusion

7.38g/t Au

39.9ppm Mo

100.5ppm Mo
222ppm Mo

20.8ppm Mo

New Area Never Prospected



Mineralized Granite Assayed 7.38g/t Au
Potassic and Carbonate Alteration

DBL– Zone 3 Extension

2024 Exploration and Prospecting Program



Mineralized Granite Assayed 7.38g/t Au
Potassic and Carbonate Alteration

Quartz Vein and sulfide mineralization associated with pegmatites cutting through the granite intrusion



Target	Access	Potential Strike Length	Historical Highlights	Possible Relation To	Past Work	Recent Work
Alkenore-Buffalo Zone 10 (Never drilled) 2025 Summer Drill Program	Excellent	+2.5km	<ul style="list-style-type: none"> Very strong surface indications with multiple high-grade samples. 2022/2023 include 10.8 g/t, 5.29 g/t, 3.8 g/t, 3.72 g/t, 0.75 g/t (Au). 	Alcona and/or Split Lake (supported by geophysics)	Trenching (1980's)	SGH Soils (2024) Grabs, Mapping, Property-wide Airborne Geophysics (2022/2023)
Split Lake (Never Drilled post 1936/37)	Excellent	+3km	<ul style="list-style-type: none"> 2 Compartment shaft (3 levels) Coarse gold n quartz veins 1936/37 historic diamond drill holes assays 3m at 16.5g/t Au. 	Alkenore Buffalo Zone 10 (supported by geophysics)	Trenching, Diamond Drilling Exploration/ Mine Shaft (1935-1937)	Grabs, Mapping, Property-wide Airborne Geophysics (2022/2023)
Rosnel (Limited Drilling)	Excellent	+4.5km	<ul style="list-style-type: none"> 2022/2023 grab samples up to 112 g/t Au. A parallel deformation zone to Moretti Deformation Zone and adjacent to the Botsford Iron Formation. 	Moretti (supported by geophysics)	Diamond Drilling (1970's)	Grabs, Property-wide Airborne Geophysics (2022/2023)
K171 Shaft	Excellent	+2.5km	<ul style="list-style-type: none"> 2022/2023 grab samples up to 25 g/t Au. Mine shaft (1998 discovery), muck sample assays 318g/t Au, multiple high grade gold values in historical trenching. Drilling in 2006 and 2008 had positive results, identifying multiple gold-mineralized horizons which are open in all directions. 	McCombe and Wright-Hargreaves (supported by geophysics)	Mine Shaft Discovered (1998), Geophysics (ground mag and EM) 1998-1999, Mapping 2004, Diamond Drilling 2006, Geophysical Modeling interp.(2017).	Grabs, Property-wide Airborne Geophysics (2022/2023)
Wright-Hargreaves	Fair	+2.5km	<ul style="list-style-type: none"> 2022/2023 multiple grab samples over 1g/t Au (1.40g/t Au, 1.65g/t Au, 1.27g/t Au, 1.27g/t Au, 1g/t Au). Multiple vein sets with significant strike length extension potential. Historic diamond drilling interacting gold mineralization up to 0.6g/t Au over 6.5m 	McCombe and Shaft (supported by geophysics)	Geophysics (Airborne & Ground), grabs, mapping, trenching, diamond drilling (1948-2013)	Grabs, Mapping, Property-wide Airborne Geophysics (2022/2023)

*Permit Pending

Drayton-Black Lake Project

*Reduced-to-Pole Magnetic Intensity
over Bedrock Geology*

New Millenium Past Company work supports multiple mineralized deformation corridors

- Highest Grab sample in Property History, 2,330 g/t Au

2025 Scout Drilling Program

**Historic High Grade Ore Shoot:
70,000 Tonne at 8.16 g/t Au**

Legacy Claim Boundary

HML Claim Boundary

Contact

1930's Mine Shafts

Alcona

Split Lake

Zone 10

HML New Claims

Zone 3 (Never Drilled post 1937)

Multiple Mineralized Zones:

- D.D.H.4: 9.14m mineralized at 2.74m. 4.27m of 7.65g/t Au, 8.53m section at 27.43m of 2.83g/t Au to 24.38g/t Au, 4.27m section above valued at 7.09g/t Au (True Width 8.3ft, 2.53m) (1936)
- D.D.H. 12: 34.14m from 27.74m, 7.32m from 99.06m, 7.32m from 21.31m, 2.13m from 131m (1937)
- D.D.H 14: 9.14m "Zone" from 132.28m Commercial Ore (Historical Report Comments) (1937)
- D.D.H 13: Values for same zone not as high as in

**Estimated ore shoot of approximately 70,000 tonnes
8.16g/t Au/ton (1980)**

Split Lake (Never Drilled post 1937)

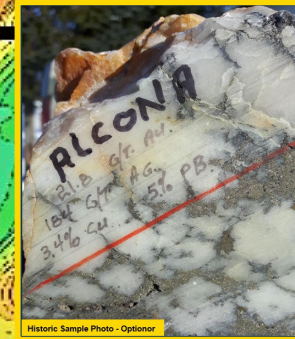
- 2 Compartment shaft (3 levels)
- Coarse gold n quartz veins 1936/37 **historic diamond drill holes assays 3m at 16.5g/t Au.**

Zone 10 (Never drilled)

- Very strong surface indications with multiple high-grade samples.
- 2022/2023 include **10.8 g/t, 5.29 g/t, 3.8 g/t, 3.72 g/t, 0.75 g/t (Au).**
- **1980 – Drilled in wrong location, remains "most interesting area"**

Alcona Area

- Past Company work confirms High Grade Au-Ag Vein System
- 200m wide, ~1km long and ~145m vertical depth deformation corridor (2023 drill program)



2024 Exploration Plan

Diamond Drilling

- Zone 3 – ~600m (5 shallow holes)
- Zone 10 – ~300m (3 shallow holes)
- Split Lake – ~200m (2 shallow holes)

Soils (SGH) and Mapping

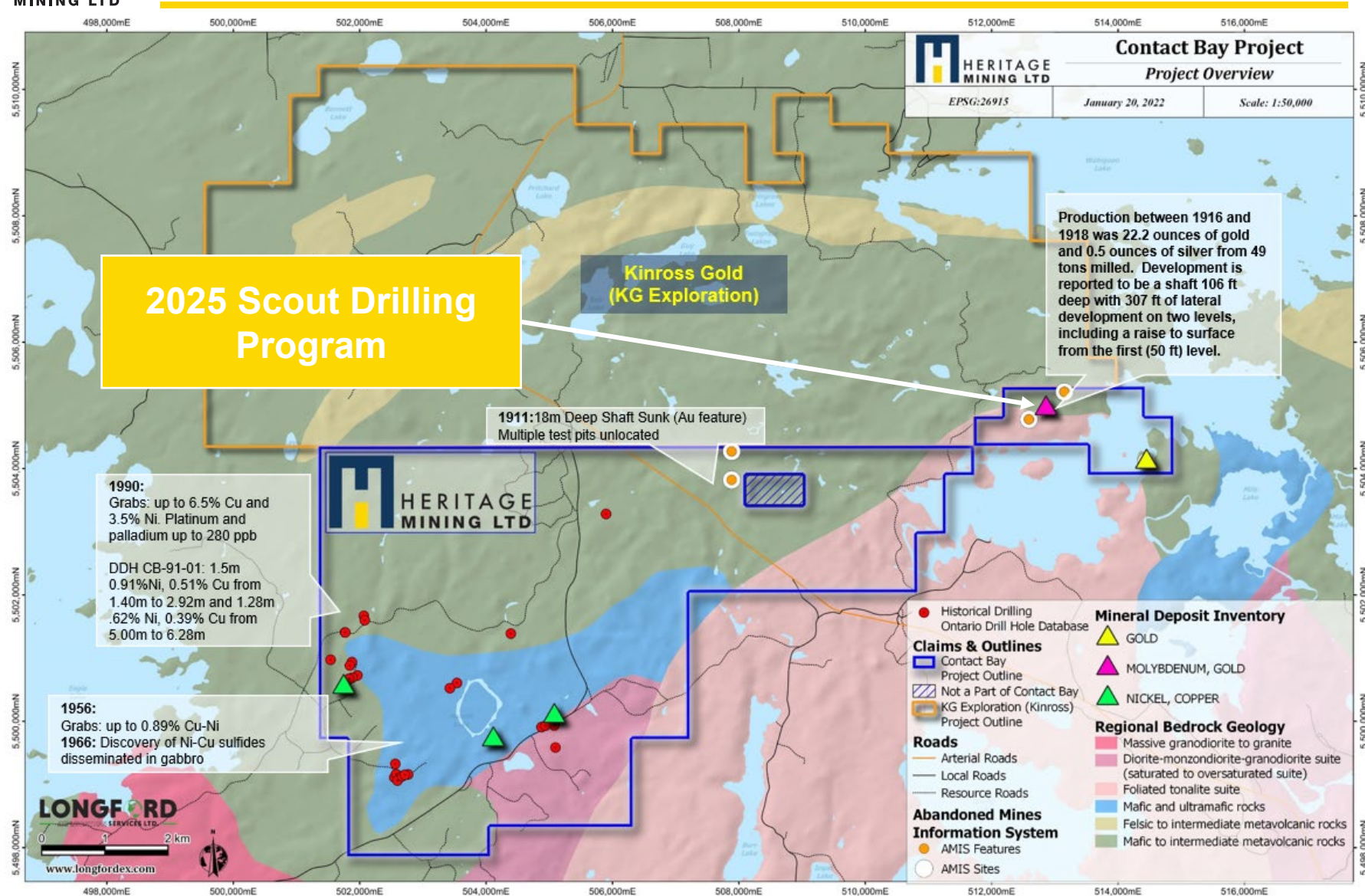
Property wide along priority zone with complementing: mineralized contact zone, geophysical and structural areas of interest

ke of Bays Batholith



Contact Bay - Area

High-Grade Gold and Copper-Nickel-Platinum-Palladium Prospects



Contact Bay Project – Rognan Mine

*3D Magnetic Susceptibility Inversion Model
Cross Section November 2024
(Oblique View)*

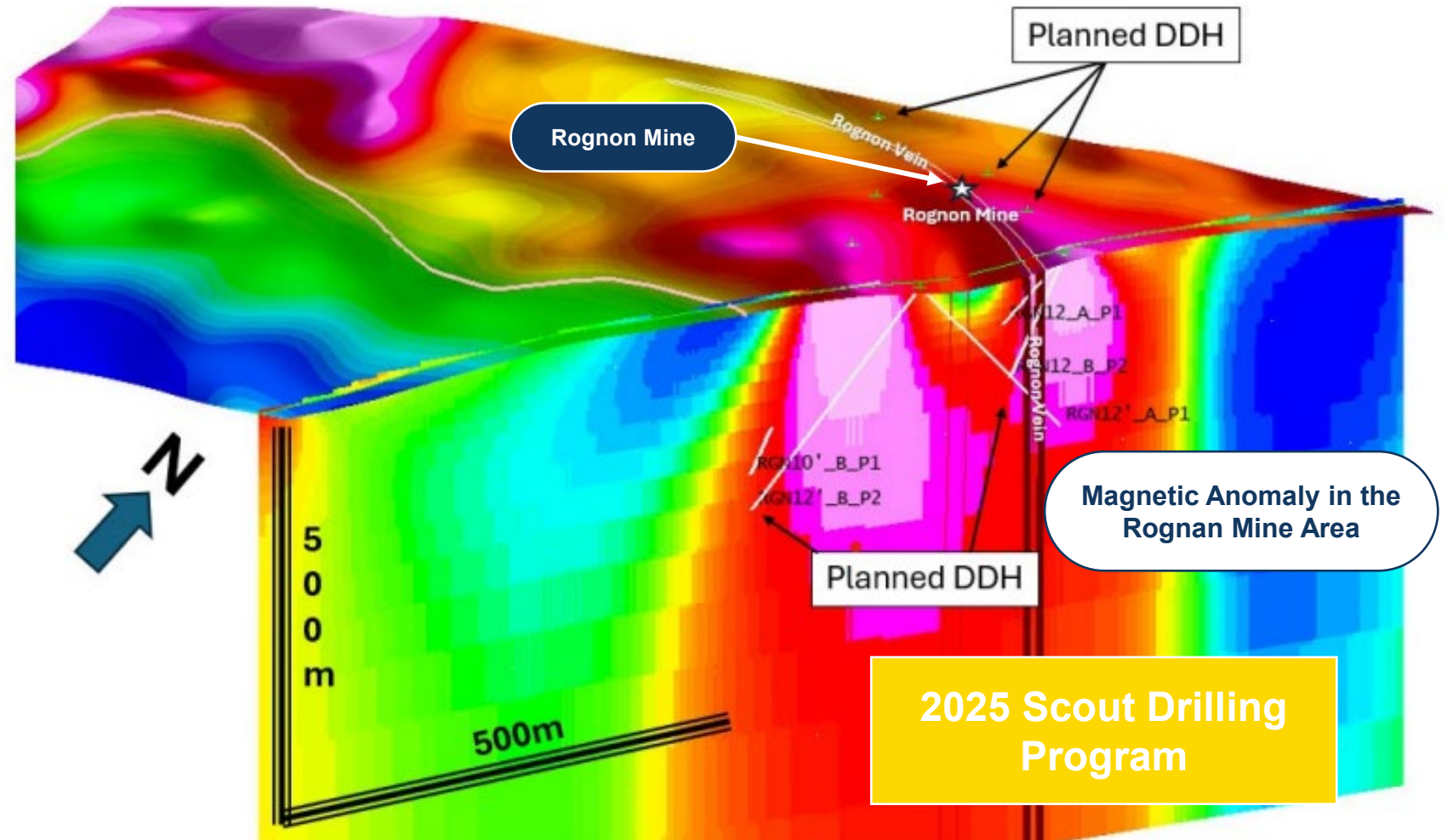
2024 Exploration Plan

Contact Bay - Rognan

- Prospecting – Completed (2023)
- UAV Mag – Completed (November 2024)
- IP – Permit Pending (Imminent)
- Diamond Drilling – Permit Pending (Imminent)

Contact Bay – Rognan Mine – Highlights

- Au - Past Development (~22.2 oz Au 1900's production)
- Geophysical Anomaly showing similar characteristics geophysical to Zone 3 regarding intrusion along a contact
- Potential Strike Length 2.5km



Planned Diamond Drill holes over UAV Mag inversion model (2024)

Magnetic Anomaly in the Rognan Mine Area

Contact Bay – Rognan Mine – Highlights

- Au - Past Development (~22.2 oz Au 1900's production)
- Geophysical Anomaly showing similar characteristics geophysical to Zone 3 regarding intrusion along a contact
- Potential Strike Length 2.5km
- 2025 Diamond Drill Program confirms gold under historic mineshaft and in proximity

2025 Exploration Plan

Contact Bay – Rognan 2025 Diamond Drill Program

1) Confirm Anomalous gold values under Rognan Mine

DDH RGN25-003: 1.47g/t Au over 2m from 84m

2) Intermediate intrusion cutting through the mafic volcanics associated with gold mineralization

DDH RGN25-004:

- 2.25 g/t Au over 2m from 101m including 4.31g/t over 1m
- 3.67g/t Au over 1.28m from 109m including 7.56g/t Au over 0.55m (visible gold observed in core)
- 0.94g/t Au over 1.05m from 258.64m including 1.76g/t Au over 0.55m
- 0.69g/t Au over 5m from 104m

DDH RGN25-007: 1.09g/t Au over 3m from 104m

**2025 Scout Drilling Program
Confirm multiple anomalous
gold results**

**Rognon Mine
Shafts**

Visible Gold in Core

RGN25-001

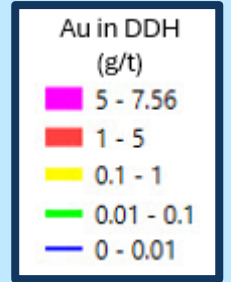
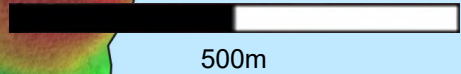
RGN25-003/002

RGN25-007

RGN25-006/004

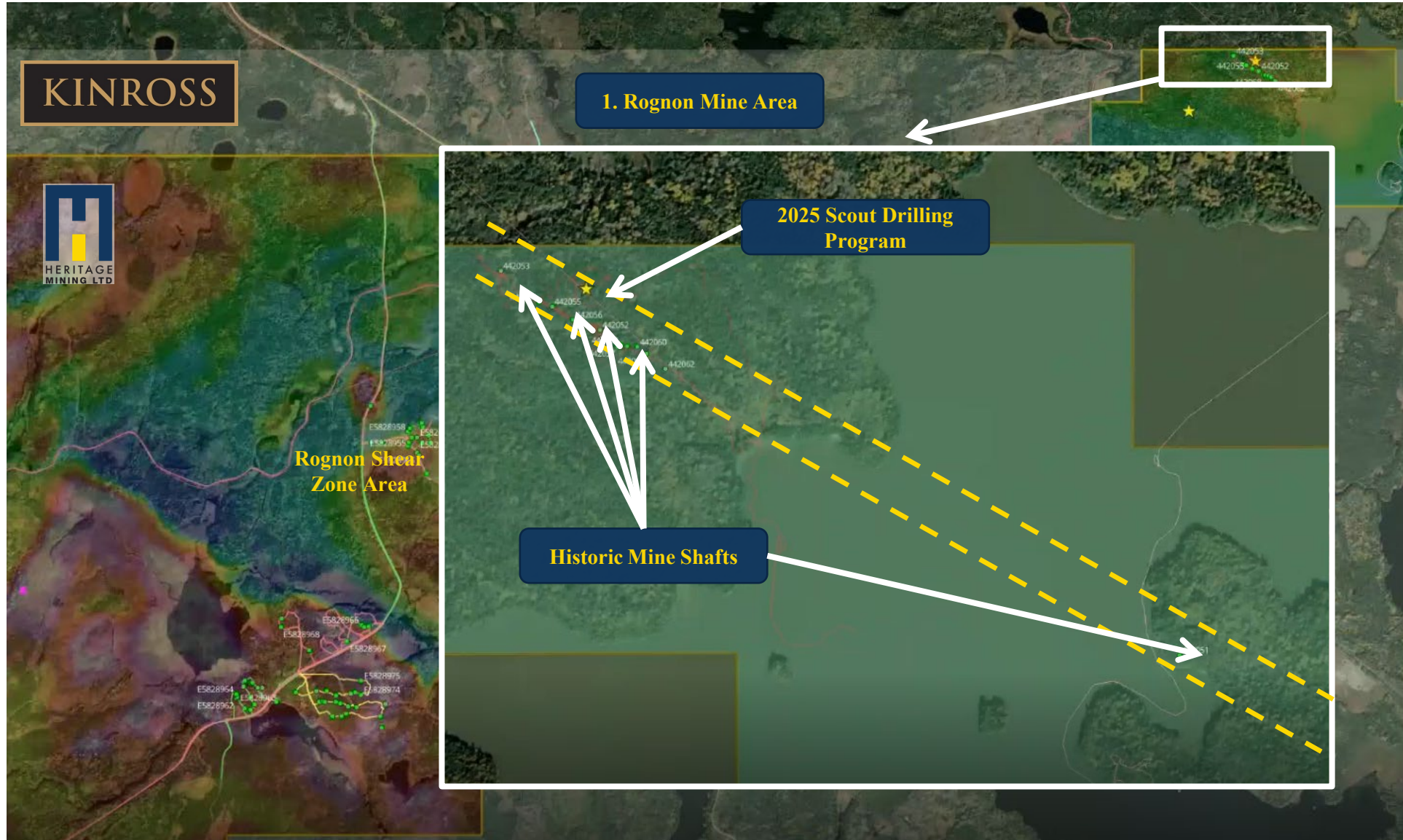
RGN25-009/010

RGN25-008



Contact Bay – Rognon Mine Area (1)

High-Grade Gold and Copper-Nickel-Platinum-Palladium Prospects



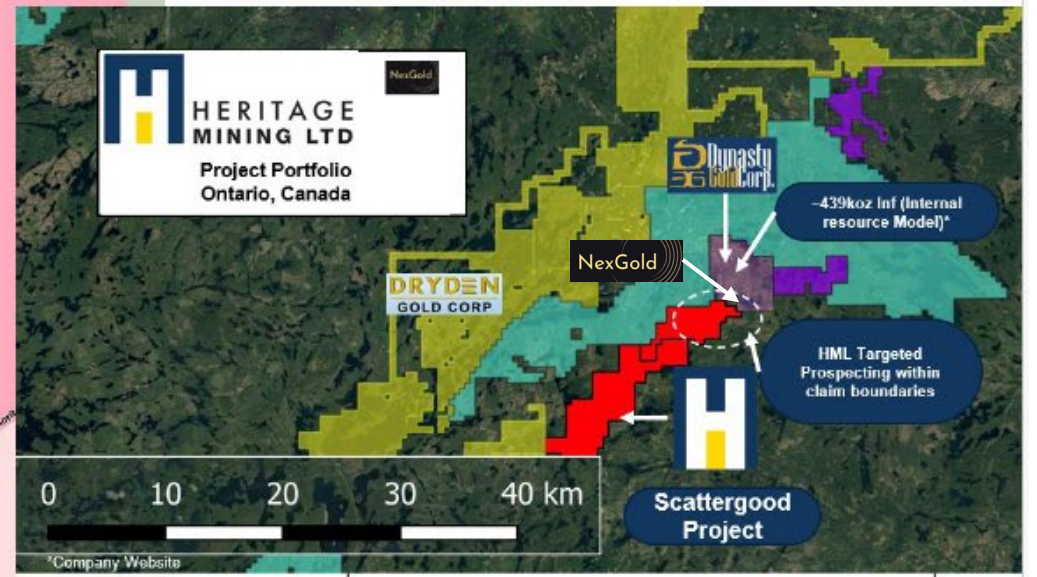
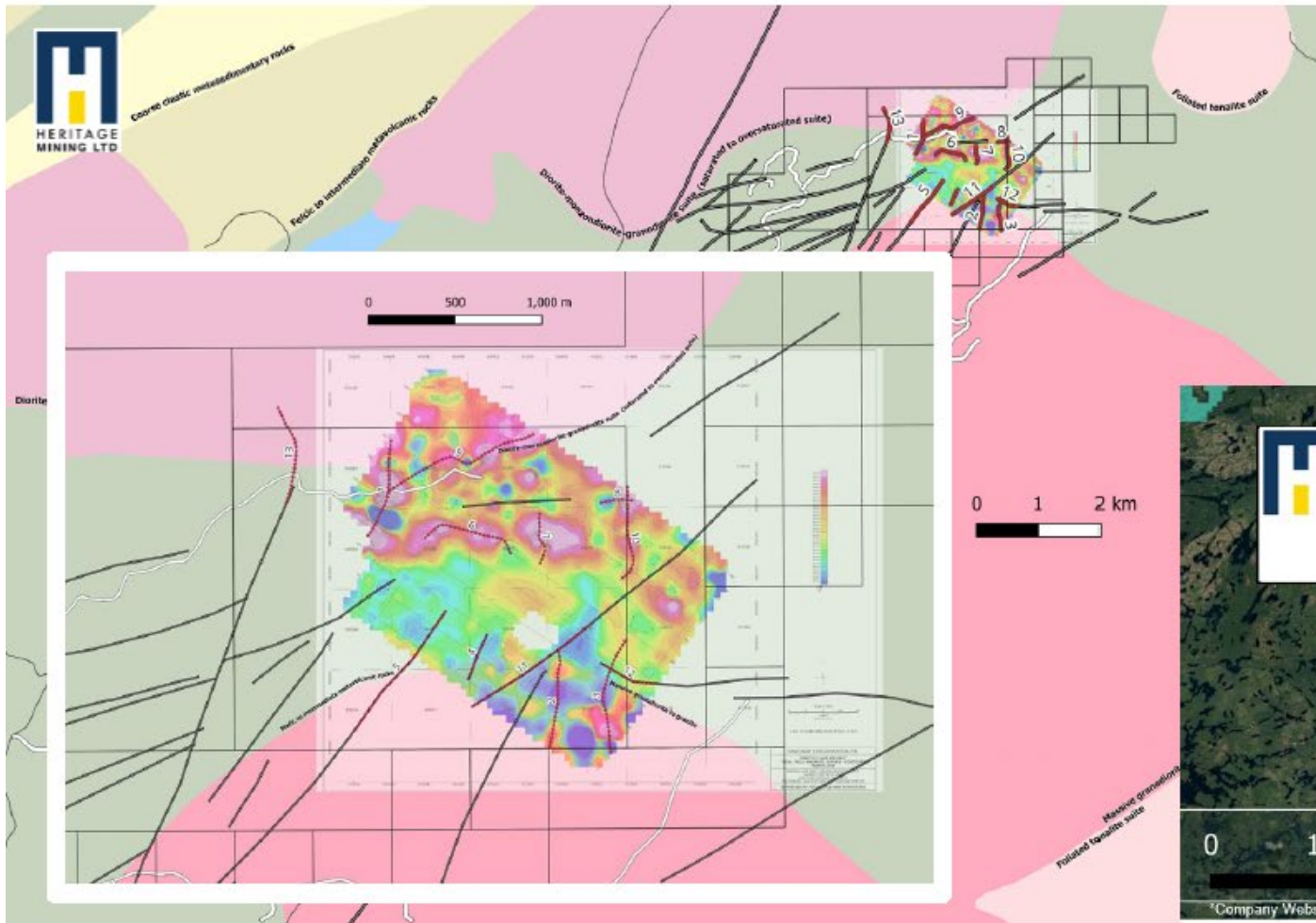
Ontario Project Portfolio

Scattergood Project

District Scale Discovery Potential
in NW Ontario, Canada

**Active 2025 Targeted
Prospecting**

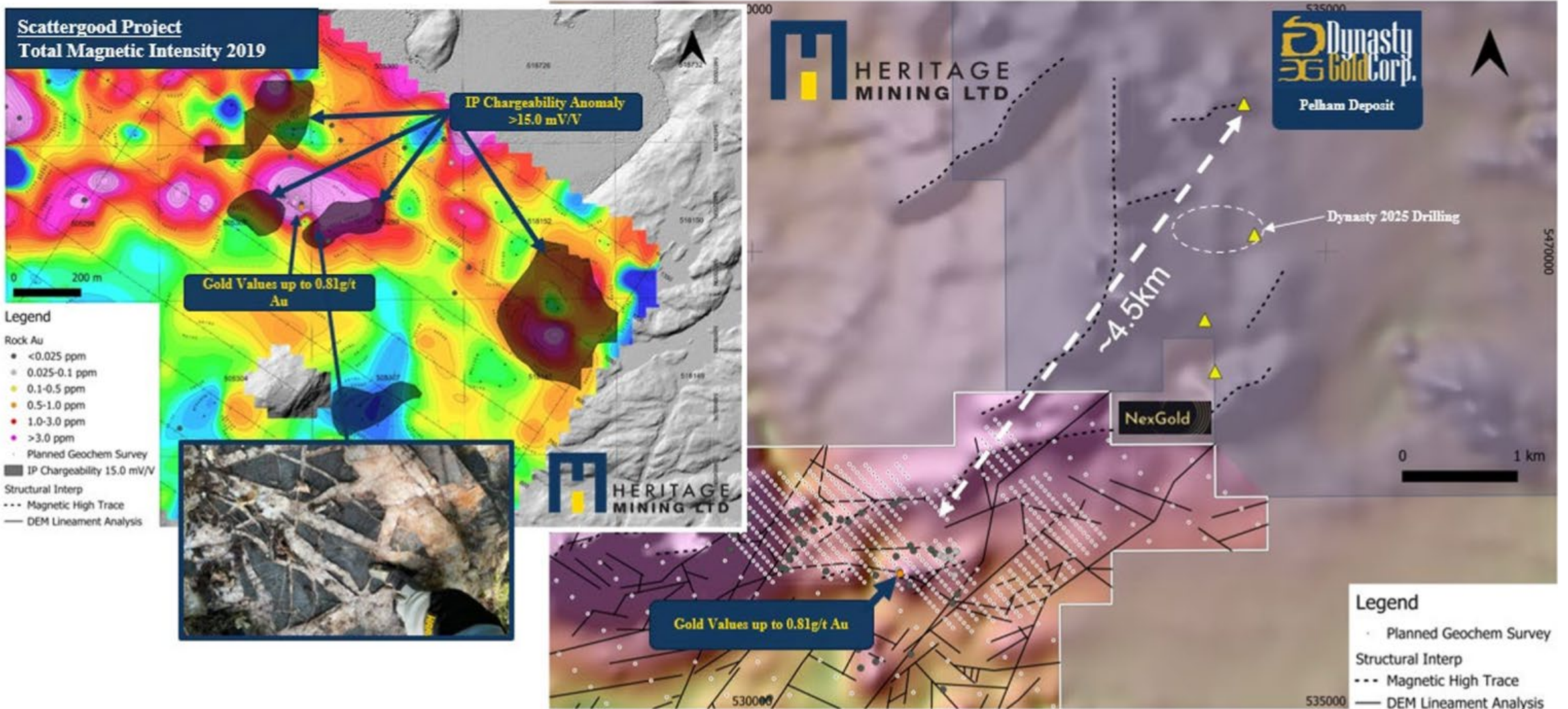
June 5-15



Ontario Project Portfolio

Scattergood Project

District Scale Discovery Potential
in NW Ontario, Canada



Ontario Project Portfolio

Core Shack – Sioux Lookout



Logging Stations

Photo Booth



Heritage Mining Inc.

Peter Schloo, CPA, CA, CFA
President, CEO & Director
peter@heritagemining.ca
905.505.0918